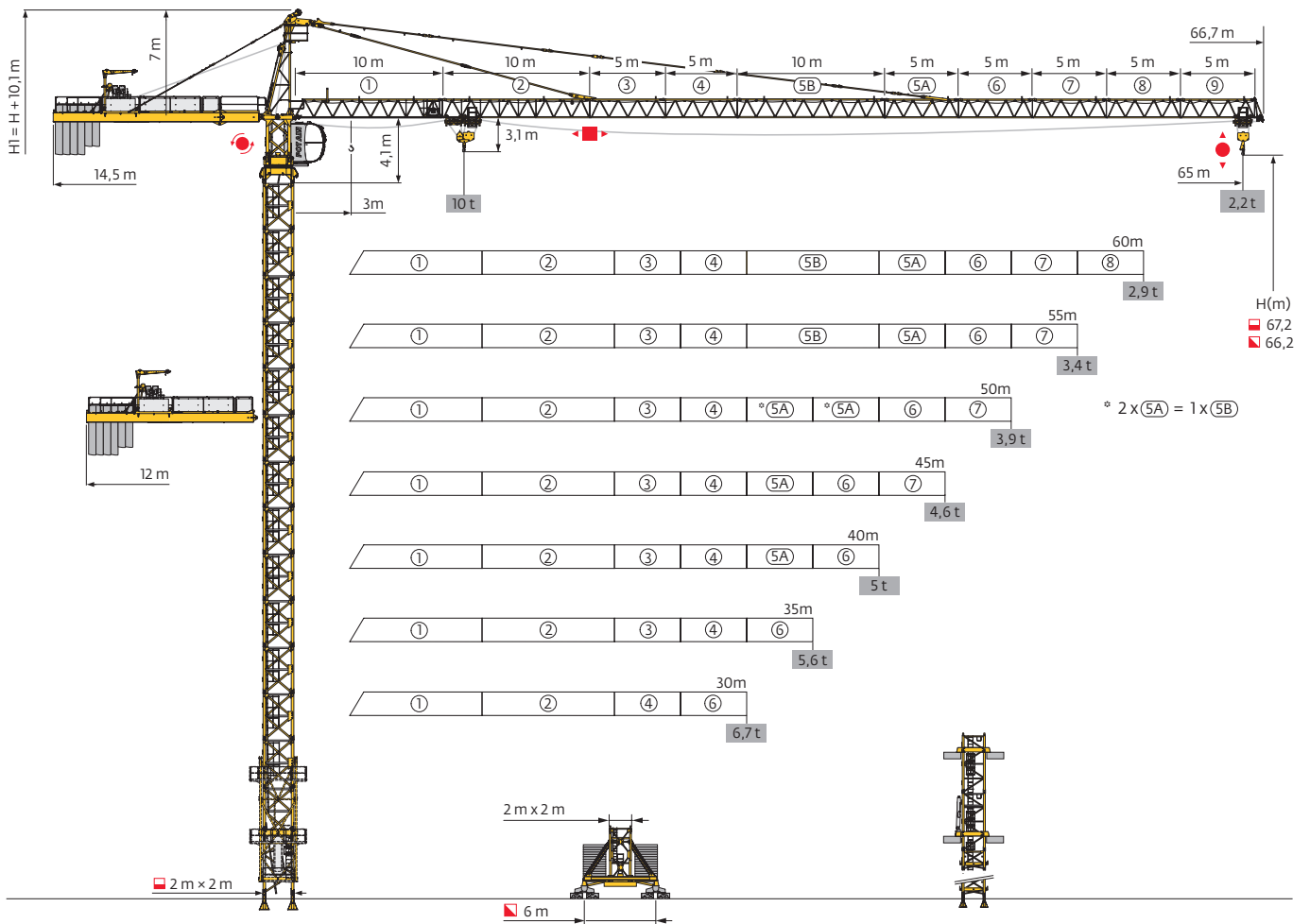


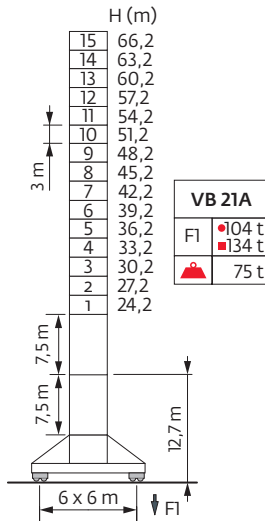
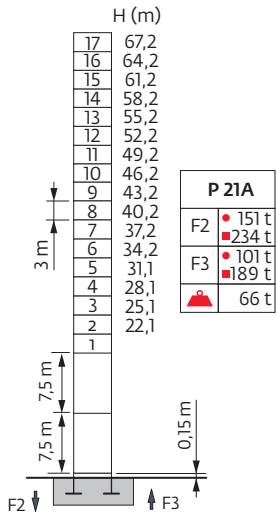
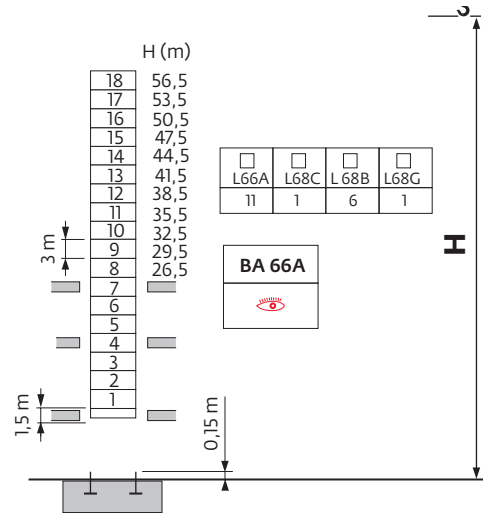
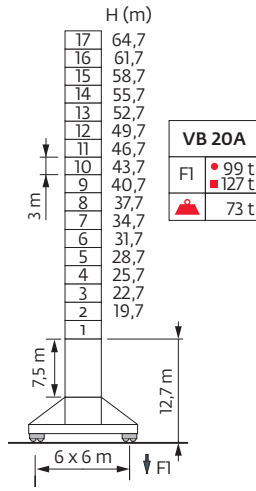
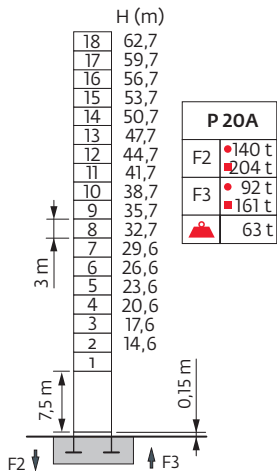
MC 235C



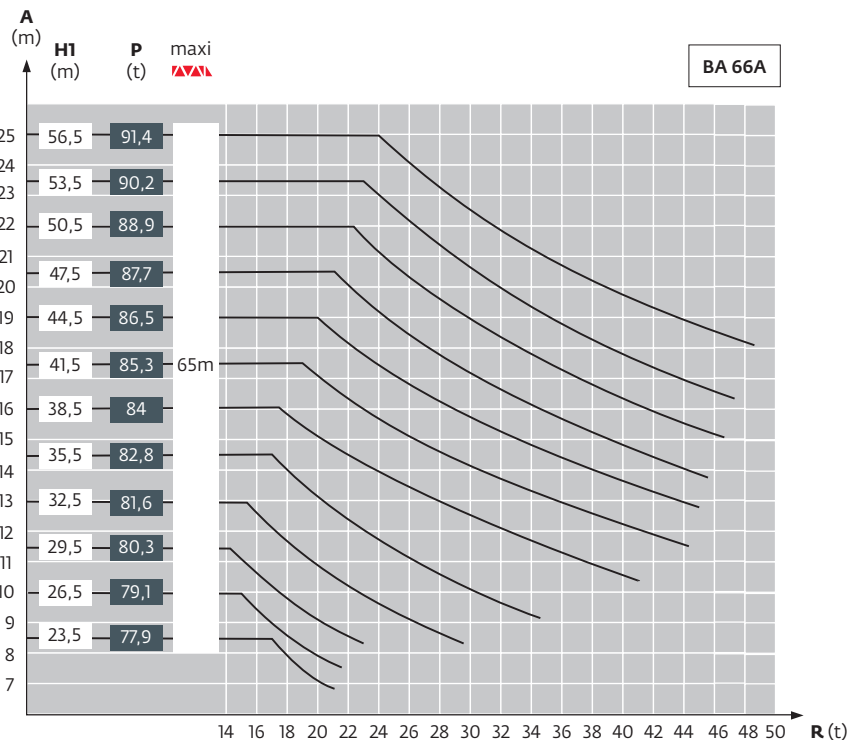
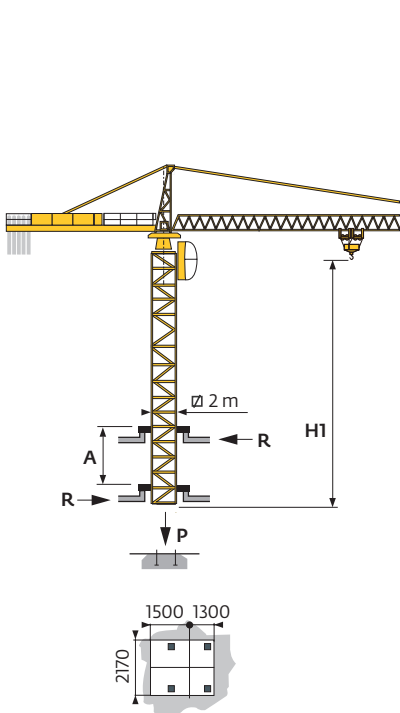
Mât - Réactions / Mast - Reaktionskräfte / Mast - Reactions / Mástil - Reacciones / Torre - Reazioni
 Tramo - Reações / Реакция опор мачты

□ 2 m

▲▲▲ 30 m → 65 m

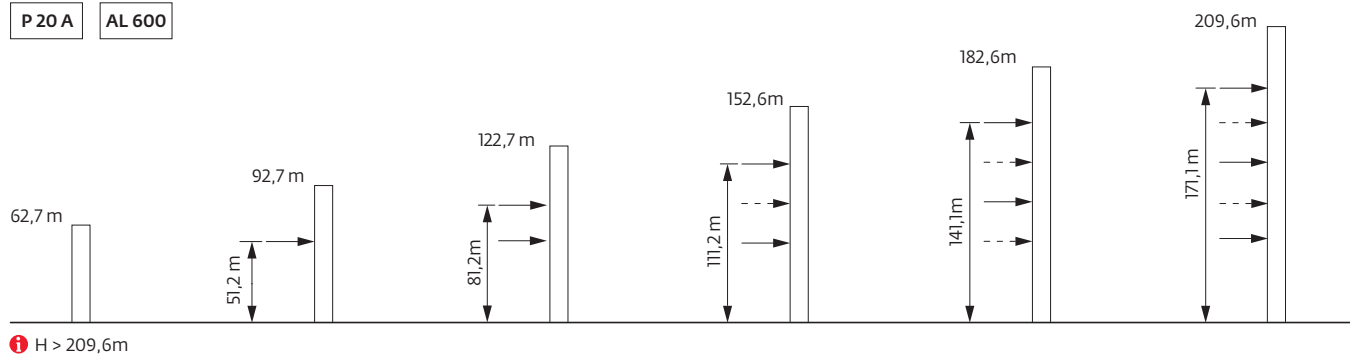


Télescopage sur dalles / Kletterkrane im Gebäude / Climbing Crane / Telescopage grua trepadora / Gru in cavedio
 Telescopagem sobre lages / Кран, ползущий внутри здания



Anchages / Verankerungen / Anchorages / Anclajes / Ancoraggi
 Ancoragem / Анкера

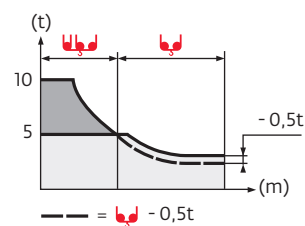
P 20 A AL 600



Courbes de charges / Lastkurven / Load curves / Curvas de carga / Curve di carico
 Curvas de carga / Кривые нагрузок



65 m	3	▶	16,9	17	20	22	25	27	30	32,9	33	35	37	40	42	45	47	50	52	55	57	60	62	65	m
▲▲▲▲			10	9,9	8,2	7,3	6,3	5,7	5	5	5	4,6	4,4	4	3,8	3,5	3,3	3,1	2,9	2,7	2,6	2,45	2,35	2,2	t
60 m	3	▶	19,3	20	22	25	27	30	32	34,5	37,8	38	40	42	45	47	50	52	55	57	60				m
▲▲▲▲			10	9,6	8,6	7,4	6,8	5,9	5,5	5	5	5	4,7	4,4	4,1	3,9	3,6	3,4	3,2	3,1	2,9				t
55 m	3	▶	20,2	22	25	27	30	32	35	36,1	39,5	40	42	45	47	50	52	55							m
▲▲▲▲			10	9,1	7,8	7,1	6,3	5,8	5,2	5	5	4,9	4,7	4,3	4,1	3,8	3,6	3,4							t
50 m	3	▶	20,6	22	25	27	30	32	35	36,9	40,3	42	45	47	50										m
▲▲▲▲			10	9,3	8	7,3	6,4	6	5,3	5	5	4,8	4,4	4,2	3,9										t
45 m	3	▶	21,4	22	25	27	30	32	35	37	38,2	41,8	45												m
▲▲▲▲			10	9,7	8,3	7,6	6,7	6,2	5,6	5,2	5	4,6													t
40 m	3	▶	21,4	22	25	27	30	32	35	37	38,4	40													m
▲▲▲▲			10	9,7	8,3	7,6	6,7	6,2	5,6	5,2	5														t
35 m	3	▶	21,4	22	25	27	30	32	35																m
▲▲▲▲			10	9,7	8,3	7,6	6,7	6,2	5,6																t
30 m	3	▶	21,4	22	25	27	30																		m
▲▲▲▲			10	9,7	8,3	7,6	6,7																		t



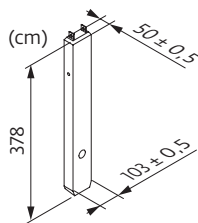
Lest de base / Grundballast / Base ballast / Lastre de base / Zavorra di base
 Lastro da base / Базовый Балласт

2 m	VB 20 A	H (m)	64,7	61,7	58,7	55,7	52,7	49,7	46,7	43,7	40,7	37,7	34,7	31,7	28,7	25,7	22,7	19,7
		(t)	120	108	84	72	60	48	48	48	48	36	36	36	36	36	36	36
	VB 21 A	H (m)	66,2	63,2	60,2	57,2	54,2	51,2	48,2	45,2	42,2	39,2	36,2	33,2	30,2	27,2	24,2	
		(t)	132	120	96	84	72	60	48	36	36	36	36	36	36	36	36	

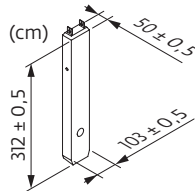
Poids de flèche & lest de contre-flèche / Auslegergewicht & Gegenauslegerballast / Jib weight & counter-jib ballast / Peso de flecha y lastre de contra-flecha / Peso del braccio & zavorra di contro-braccio / Peso da lança & lastro da contra lança
 Вес стрелы и балласт контр-стрелы

			75 LVF / 60 LVF			
			4200 kg	3400 kg	2300 kg	(kg)
65 m	7785	8210	4	2	0	23 600
60 m	7500	7925	3	2	1	21 700
55 m	7175	7600	4	1	0	20 200
50 m	6535	6960	4	2	0	23 600
45 m	6245	6670	3	2	1	21 700
40 m	5850	6275	3	2	0	19 400
35 m	5355	5780	4	0	0	16 800
30 m	4710	5135	2	1	1	14 100

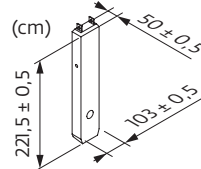
CA - 4200 kg



CR - 3400 kg





CS - 2300 kg



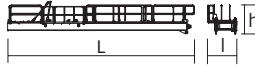

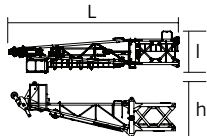
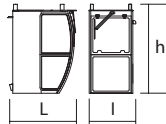
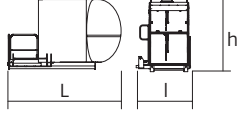
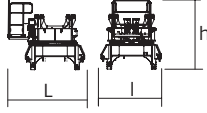
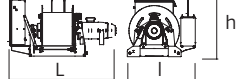
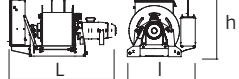
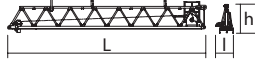
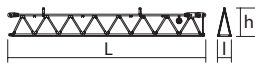
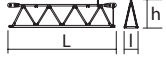
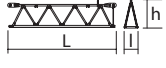
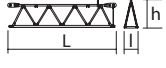
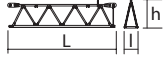
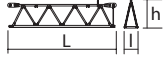
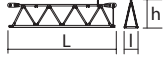
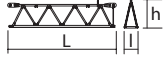
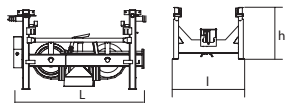
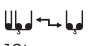
Encombremet et poids / Abmessungen und Gewicht / Dimensions and weight / Dimensiones y peso / Ingombro e peso
dimensões e pesos / габаритные размеры и вес

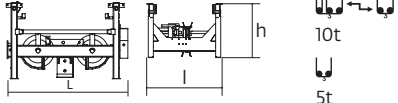
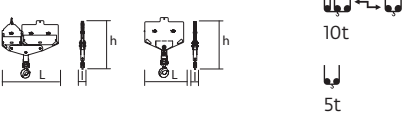
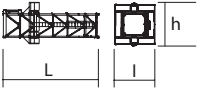
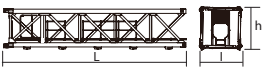

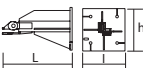

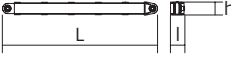
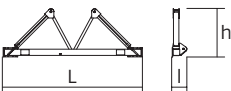
Partie tournante / Drehender Kranteil / Slewing crane part / Parte giratoria

Parte rotante / Parte rotativa / Поворотная часть :  65 m -  75 LVF








 x 6


 x 6








Partie tournante / Drehender Kranteil / Slewing crane part Parte giratoria / Parte rotante / Parte rotativa Поворотная часть		L (m)	l (m)	h (m)	kg (+/- 5%)		
Contre-flèche / Gegenausleger Counter-jib / Contra-flecha Controbraccio / Contra-lança Контр-стрела		11,31	2,01	2,23	4120		
		2,89	1,58	1,7	800		
Porte-flèche / Auslegerträger Cathead / Porta-flecha Cuspide / Suporte de lança Оголовок		9,54	1,77	2,88	4410		
Cabine / Kabine Cab / Cabina Cabina / Cabina Кабина	 Smartview	1,68	1,18	2,31	385		
Cabine / Kabine Cab / Cabina Cabina / Cabina Кабина	 V140S	3,4	1,9	2,57	1130		
Pivot / Krankopf Towerhead / Pivot Portaralla / Pivot Секция поворотной части	 \square 2 m	2,92	2,5	2,73	5120		
Treuil de levage (+ câble) / Hubwerk (+ Seil) Hoisting winch (+ rope) / Mecanismo de elevación (+ cabo) Argano di sollevamento (+ fune) Guincho de elevação (+ cabo) Подъемная лебедка (+ канатом)		60 LVF 2,48	2,37 1,62	1,35 1,4	2065 2520		
		75 LVF	2,48	1,62	2520		
Elément de flèche / Auslegerelement Jib section / Elemento de flecha Elemento di braccio / Elemento de lança Секция стрелы		① 6 D3 V4	10,22	1,93	1,18	1705	
		② ⑤B	10,25 10,23	1,38 1,38	1,17 1,17	1345 930	
Elément de flèche / Auslegerelement Jib section / Elemento de flecha Elemento di braccio / Elemento de lança Секция стрелы		③	5,23	1,38	1,15	645	
		④	5,23	1,38	1,14	645	
		⑤A	5,23	1,38	1,14	495	
		⑥	5,2	1,38	1,14	530	
		⑦	5,17	1,38	1,13	395	
		⑧	5,15	1,38	1,1	325	
		⑨	5,15	1,38	1,1	285	
	Chariot / Laufkatze Trolley / Carrello Carro / Carro-distribuidor Тележка		 10t	1,64	1,64	0,97	270

Partie tournante / Drehender Kranteil / Slewing crane part Parte giratoria / Parte rotante / Parte rotativa Поворотная часть		L (m)	I (m)	h (m)	kg (+/- 5%)
Chariot / Laufkatze Trolley / Carrello Carro / Carro-distribuidor Тележка		1,83	1,64	0,97	290
Moufle / Hubflasche Pulley block / Aparejo Bozzello / Cadernal Полиспаст		1,38 0,92	0,26 0,22	1,4 1,41	350 195
Equipement de télescopage / Teleskopierausrüstung / Telescoping equipment Equipo de telescopaje / Equipaggiamento di telescopaggio / Equipamento de telescopagem Оборудование для телескопирования					
Cage de télescopage / Teleskopwagen Telescopic cage / Jaula de telescopaje Gabbia di telescopaggio / Gaiola de telescopagem для телескопирования крана		7,3	3,78	3,98	4605
Mâture / Mastwerk / Masts Mástil / Torre / Coluna Мачты					
S 68 J SR 68 J		7,74 7,74	2,1 2,1	2,1 2,1	4170 5175
L 66 A3 L 68 B3		3,26 3,26	2,12 2,12	2,12 2,12	1410 1530
Bases / Kranbasen / Crane bases Bases / Basi / Bases фундамент под кран					
Pieds de scellement / VerankerungsfüÙe Fixing angles / Pie de empotramiento Montante da annegare / Angulos fixadores анкера					P 20 A 300 R 20 A 225 P 21 A 500 R 21 A 200
Mât-châssis / Grundmasteinheit Basic mast unit / Tramo-chassis Elemento base / Tramo-chassis Мачта для крепления к шасси					VB 20 A 4360
Haubans / Mastabstützungen Struts / Tornapuntas Puntoni / Escoras Растяжка					VB 20 A 390
Sommier / Unterwagenhälfte Half-bearer / Testero Testata / Estrutura base Траверса					VB 20 A 1600

Mécanismes / Triebwerke / Mechanisms / Mecanismos / Meccanismi
 Mecanismos / Механизмы

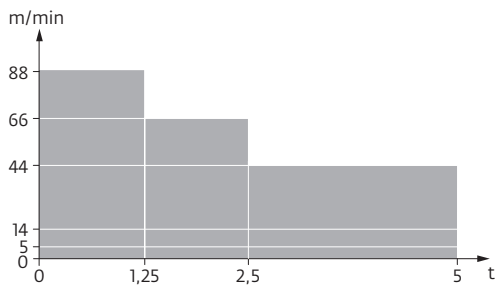
400 V - 50 Hz													hp	kW	
	60 LVF 25	m/min	5	14	44	66	88	2,6	7	22	33	44	60	45	500m
		t	5	5	5	3,75	2,5	10	10	10	7,5	5			
	75 LVF 25 Optima	m/min	53	68	95	117	26,5	34	47,5	58,5	75	55	895 m		
		t	5	3,75	2,5	1,25	10	7,5	5	2,5					
	6 D3 V4	m/min	10 - 50 (10 t) - 100 (5 t)									6	4,4		
	RCV185	rpm	0 → 0,8									2 x 9	2 x 6,6		
	VB20A RT 544 A1 2V R ≥ 13 m	m/min	13,5 → 27									4 x 7	4 x 5,2		

CEI 38  IEC 38	kVA
400 V (+10% -10%) 50 Hz	60 LVF : 69 kVA 75 LVF : 81 kVA

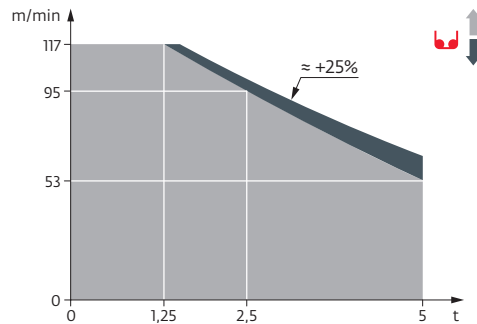
480 V - 60 Hz													hp	kW	
	60 LVF 25	m/min	5	14	44	66	88	2,6	7	22	33	44	60	45	500 m
		t	5	5	5	3,75	2,5	10	10	10	7,5	5			
	75 LVF 25 Optima	m/min	53	68	95	117	26,5	34	47,5	58,5	75	55	895 m		
		t	5	3,75	2,5	1,25	10	7,5	5	2,5					
	6 D3 V4	m/min	12 - 60 (10 t) - 120 (5 t)									7,2	5,3		
	RCV185	rpm	0 → 0,96									2 x 10,8	2 x 7,9		
	VB20A RT 544 A1 2V R ≥ 13 m	m/min	16 → 32									4 x 8,4	4 x 6,2		

CEI 38  IEC 38	kVA
480 V (+6% -10%) 60 Hz	60 LVF : 73 kVA 75 LVF : 85 kVA

















60 LVF 25



75 LVF 25 Optima



FR

-  Appel de flèche
-  Réactions en service
-  Réactions hors service
-  A vide sans lest avec flèche et hauteur maximum
-  Poids total du lest
-  Camion 13,4 m
-  Conteneur High Cube 40"
-  Cadre d'ancrage serré
-  Cadre d'ancrage desserré
-  Levage
-  Distribution
-  Orientation
-  Translation
-  Puissance nominale
-  Voir télescopage sur dalles
-  Nous consulter

DE

- Auslegerüberhöhung
- Reaktionskräfte in Betrieb
- Reaktionskräfte außer Betrieb
- Gewicht ohne Last, ohne Ballast, mit Ausleger und max. Höhe
- Ballast-Gesamtgewicht
- Lkw 13,4 m
- Container High Cube 40"
- Fester Verankerungsrahmen
- Looser Verankerungsrahmen
- Heben
- Katzfahren
- Schwenken
- Kranfahren
- Nennleistung
- Siehe Kletterkrane im Gebäude
- Auf Anfrage

EN

- Jib elevation
- Reactions in service
- Reactions out of service
- Weight without load, without ballast, with jib and max. height
- Total ballast weight
- Lorry 13,4 m
- Container High Cube 40"
- Tightened anchorage frame
- Loosened anchorage frame
- Hoisting
- Trolleying
- Slewing
- Travelling
- Rated power
- See climbing crane
- Consult us

ES

- Elevación de la flecha
- Reacciones en servicio
- Reacciones fuera de servicio
- Peso en vacío sin lastre, con flecha y altura máxima
- Peso total del lastre
- Camión 13,4 m
- Contenedor High cube 40"
- Marco de anclaje de apriete
- Marco de anclaje de desapriete
- Elevación
- Distribución
- Orientación
- Traslación
- Potencia nominal
- Vea grúa trepadora
- Consultarnos

IT

- Inclinazione braccio
- Reazioni in servizio
- Reazioni fuori servizio
- Peso a vuoto, senza zavorra, con braccio e altezza massimi.
- Peso totale della zavorra
- Camion 13,4 m
- Container High Cube 40"
- Quadro di ancoraggio stretto
- Quadro di ancoraggio allentato
- Sollevamento
- Distribuzione
- Rotazione
- Traslazione
- Potenza nominale
- Consultare gru in cavedio
- Consultateci

PT

- Desvio da lança
- Reacções em serviço
- Reacções fora de serviço
- Peso em vazio sem lastro com lança e altura máxima.
- Peso total do lastro
- Camião 13,4 m
- Contentor 40"
- Quadro de amarração apertado
- Quadro de amarração solto
- Elevação
- Distribuição
- Rotação
- Traslação
- Potência nominal
- Ver telescopagem sobre lages
- Consultar-nos

RU

- подъем стрелы
- Реакция при работе
- Реакция в покое
- Вес пустого, без балласта, со стрелой, максимальной высоты.
- Общий вес балласта
- Ррузовой автомобиль 13,4 м
- Контейнер повышенной вместимости длиной 40"
- Прикрепленная анкерная рама
- Отсоединенная анкерная рама
- Подъем
- Перемещение по стреле
- Поворот
- Перемещение крана
- Номинальная мощность
- См. кран, ползущий внутри здания
- Проконсультируйтесь у нас



Document commercial non contractuel. Pour toute information technique se référer à la notice correspondante.

Unverbindliches Vertriebsdokument. Für technische Informationen, siehe die entsprechenden Anweisungen.

This commercial document is not legally binding. For any technical information, please refer to the corresponding instructions.

Documento comercial no contractual. Para cualquier información técnica, ver la noticia correspondiente.

Documento commerciale non vincolante, per tutte le informazioni tecniche fare riferimento al catalogo istruzioni.

Documento comercial não contractual. Para qualquer informação técnica complementar consultar as respectivas instruções.

Этот коммерческий документ не является юридически обязательным. Для получения технической информации, см. соответствующие инструкции.



Americas
Manitowoc, Wisconsin, USA
 Tel: +1 920 684 4410
 Fax: +1 920 652 9778

Shady Grove, Pennsylvania, USA
 Tel: +1 717 597 8121
 Fax: +1 717 597 4062

Europe, Middle East, Africa
Dardilly, France
 Tel: +33 (0)4 72 18 20 20
 Fax: +33 (0)4 72 18 20 00

China
Shanghai, China
 Tel: +86 21 6457 0066
 Fax: +86 21 6457 4955

Greater Asia-Pacific
Singapore
 Tel: +65 6264 1188
 Fax: +65 6862 4040

www.manitowoccranes.com

© 2018 The Manitowoc Company, Inc.