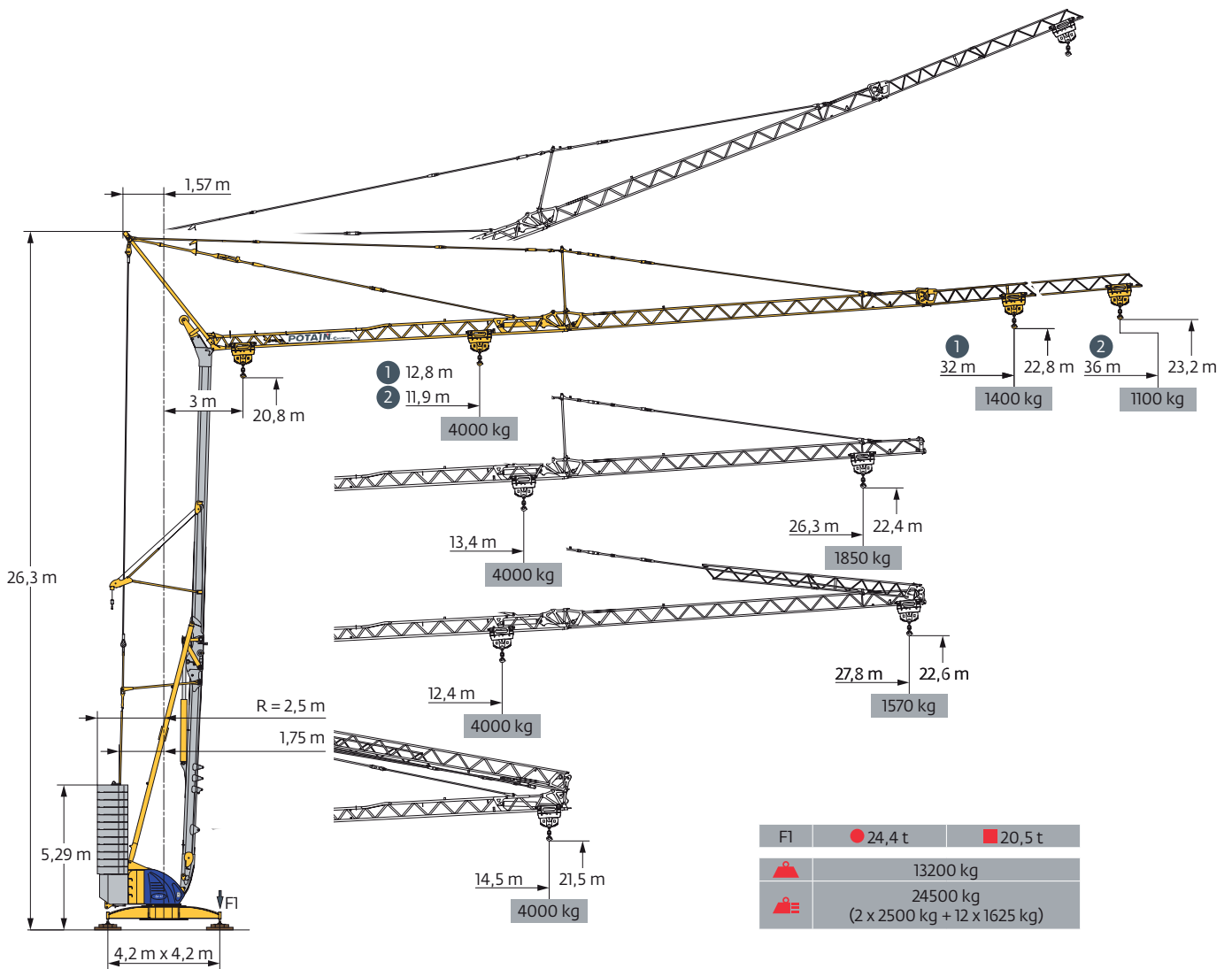


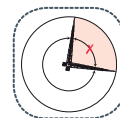
## Igo 42



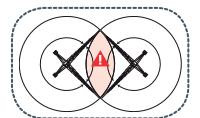
SmartCom



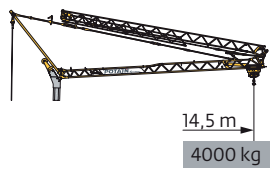
Top Zone



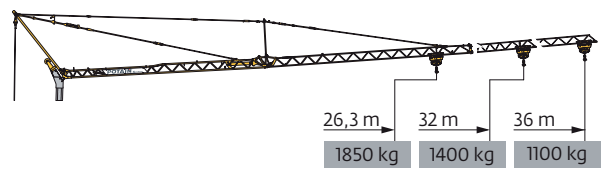
Top Tracing II



Courbes de charges / Lastkurven / Load curves / Curvas de cargas / Curve di carico  
 Curvas de carga / Кривые нагрузок



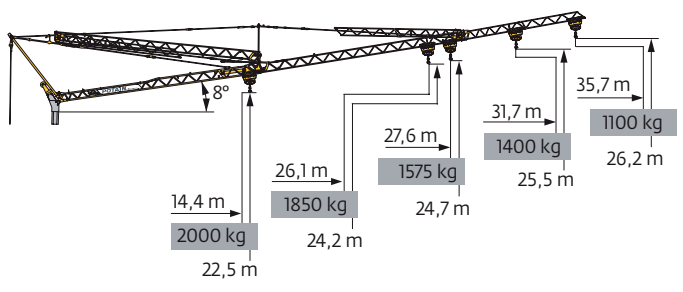
36 m	3	▶ 14,5 m	4000 kg
▲▲▲			2000 kg
▲▲▲			2000 kg
32 m	3	▶ 14,5 m	4000 kg
▲▲▲			2000 kg
▲▲▲			2000 kg
26,3	3	▶ 14,5 m	4000 kg
▲▲▲			2000 kg
▲▲▲			2000 kg



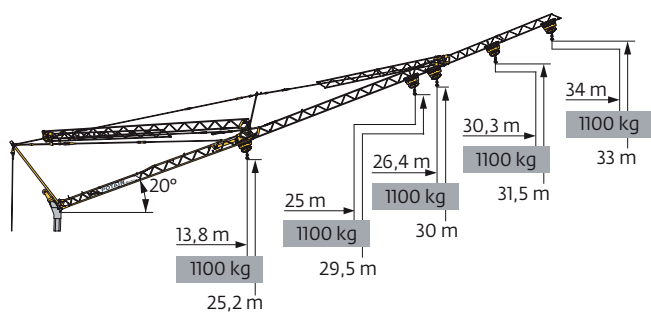
3	▶ 11,9	12	14	16	18	20	20,8	21,8	22	24	26	28	30	32	34	36	m
▲▲▲																	kg
																	kg
																	kg
3	▶ 12,8	14	16	18	20	22	22,6	23,6	24	26	28	30	32				m
▲▲▲																	kg
																	kg
																	kg
3	▶ 13,4	14	16	18	20	22	23,6	24	24,6	26,3							m
▲▲▲																	kg
																	kg
																	kg



36 m	3	▶ 12,4	14	16	18	20	21,7	22	22,6	24	26	27,8	m
▲▲▲													kg
													kg
													kg
													kg










36 m	3	▶ 20,6	21,5	22	24	26	28	30	32	34	35,7	m
▲▲▲												kg
												kg
												kg
32 m	3	▶ 22,4	23,3	24	26	28	30	31,7				m
▲▲▲												kg
												kg
												kg
26,3 m	3	▶ 23,6	24,6	25	26,1							m
▲▲▲												kg
												kg
												kg
36 m	3	▶ 21,6	22	22,5	24	26	27,6					m
▲▲▲												kg
												kg
												kg
36 m	3	▶ 14,4										m
▲▲▲												kg
												kg



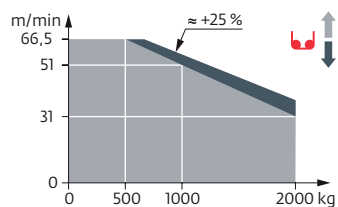
36 m	3	▶									34	m
▲▲▲												kg
												kg
32 m	3	▶									30,3	m
▲▲▲												kg
												kg
												kg
26,3 m	3	▶	25									m
▲▲▲												kg
												kg
36 m	3	▶									26,4	m
▲▲▲												kg
												kg
36 m	3	▶	13,8									m
▲▲▲												kg
												kg

Mécanismes / Triebwerke / Mechanisms / Mecanismos / Meccanismi  
 Mecanismos / Механизмы

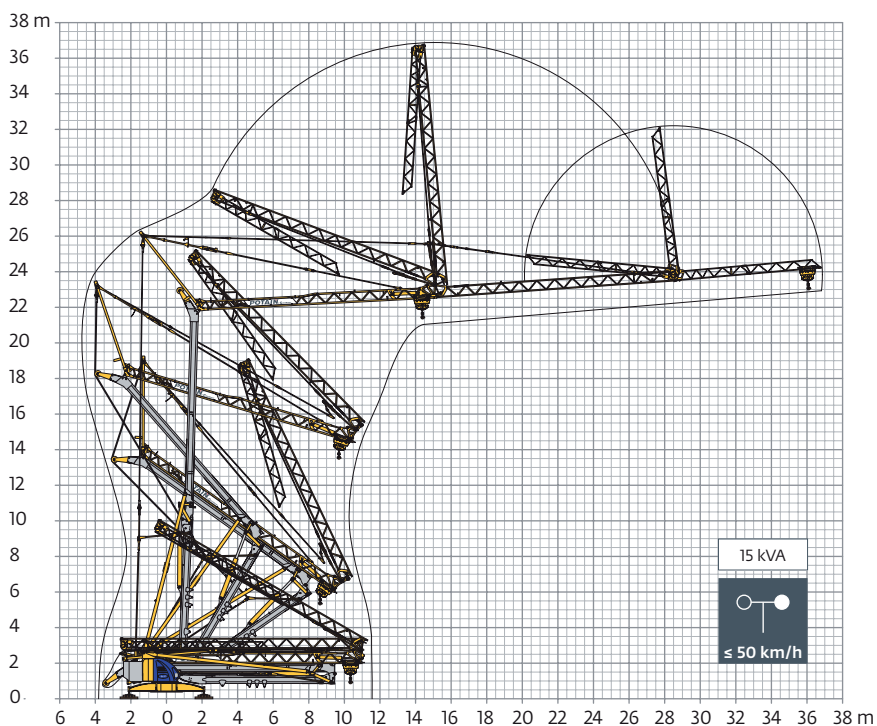
400 V - 50 Hz 480 V - 60 Hz													ch - PS hp	kW
	<b>15 LVF 10 Optima</b>	m/min	3,6	18	31	51	66,5	1,8	9	15,5	25,5	33	15	11
		kg	2000	2000	2000	1000	500	4000	4000	4000	2000	1000		
	<b>3 DVF 5</b>	m/min	15 - 30 - 45 (0 → 1000 kg) 15 - 30 - 41 (1000 → 4000 kg)									3	2,2	
	<b>RVF 41 Optima+</b>	tr/min U/min rpm	0 → 0,8									2	3	

 IEC 60204-32	 kVA
400 V (+10% -10%) 50 Hz / 480 V (+6% -10%) 60 Hz	15 kVA

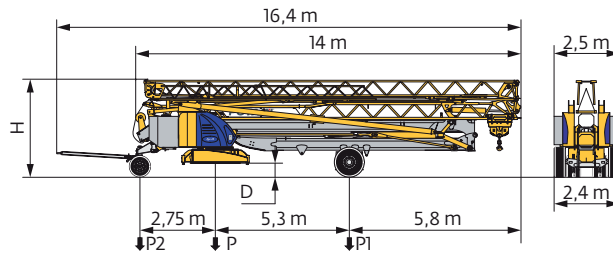
**15 LVF 10 Optima**



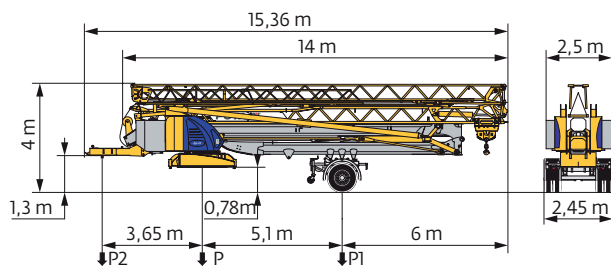
Montage / Montage / Erection / Montaje / Montaggio  
 Montagem / Монтаж



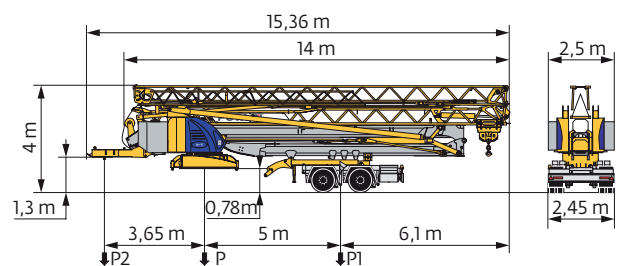
Transport / Transport / Transport / Transporte / Trasporto  
Transporte / Транспортировка



	km/h	D (m)	H (m)	P (kg)	P1 (kg)	P2 (kg)
DJ100/S120	10	0,36/0,21	3,52/3,37	20010	10605	9405
DJ105/S125	25	0,36/0,21	3,52/3,37	20300	10815	9485
..... /..... <b>i</b>						



	km/h	P (kg)	P1 (kg)	P2 (kg)
SL121/J135	25	21060	12790	8270
..... /..... <b>i</b>				



	km/h	P (kg)	P1 (kg)	P2 (kg)
SL122/J215M (EBS)	80	21980	14100	7880

**FR**

- R** Rayon de giration
- i** Nous consulter
- Réactions en service
- Réactions hors service
- ⚖** Poids à vide, sans lest, sans trains de transport, avec flèche maxi. et hauteur standard.
- ⚖** Poids total du lest
- 🧰** Équipements standards
- 🧰** Équipements optionnels
- ⬆** Levage
- ➡** Distribution
- 🔄** Orientation
- kVA** Puissance requise

**DE**

- Schwenk radius
- Auf Anfrage
- Reaktionskräfte in Betrieb
- Reaktionskräfte außer Betrieb
- Gewicht ohne Last, ohne Ballast, ohne Transportachsen mit max. Auslager und Standardhöhe
- Ballast-Gesamtgewicht
- Standardausrüstungen
- Sonderausrüstungen
- Heben
- Katzfahren
- Schwenken
- Erforderliche Leistung

**EN**

- Rear slewing radius
- Consult us
- Reactions in service
- Reactions out of service
- Weight without load, without ballast, without transport axes, with max. jib and standard height
- Total ballast weight
- Standard equipment
- Options
- Hoisting
- Trolleying
- Slewing
- Required power

**ES**

- Radio de giro
- Consultarnos
- Reacciones en servicio
- Reacciones fuera de servicio
- Peso en vacío, sin lastre, sin trenes de transporte con flecha y altura estándar
- Peso total del lastre
- Equipamiento de serie
- Equipamiento opcional
- Elevación
- Distribución
- Orientación
- Potencia Necesaria

**IT**

- Raggio di rotazione
- Consultateci
- Reazioni in servizio
- Reazioni fuori servizio
- Peso a vuoto, senza zavorra, senza assali di trasporto, con braccio max e altezza standard.
- Peso totale della zavorra
- Equipaggiamento standard
- Equipaggiamento in opzione
- Sollevamento
- Distribuzione
- Rotazione
- Potenza richiesta

**PT**

- Raio de rotação
- Consultar-nos
- Reacções em serviço
- Reacções fora de serviço
- Peso em vazio, sem lastro, sem eixos de transporte com lança máxima e altura standard.
- Peso total do lastro
- Equipamento de série
- Equipamento opcional
- Elevação
- Distribuição
- Rotação
- Potência Necessária

**RU**

- Задний габарит
- Проконсультируйтесь у нас
- Реакция при работе
- Реакция в покое
- Вес без груза, без балласта, без осей для транспортировки, с максимальным вылетом стрелы и стандартной высотой
- Общий вес балласта
- Стандартное оборудование
- Дополнительное оборудование (опция)
- Подъем
- Перемещение по стреле
- Поворот
- Потребляемая мощность

**⚠** Document commercial non contractuel. Pour toute information technique se référer à la notice correspondante. Unverbindliches Vertriebsdokument. Für technische Informationen, siehe die entsprechenden Anweisungen. This commercial document is not legally binding. For any technical information, please refer to the corresponding instructions. Documento comercial no contractual. Para cualquier información técnica, ver la noticia correspondiente. Documento commerciale non vincolante, per tutte le informazioni tecniche fare riferimento al catalogo istruzioni. Documento comercial não contratual. Para qualquer informação técnica complementar consultar as respectivas instruções. Этот коммерческий документ не является юридически обязательным. Для получения технической информации, см. соответствующие инструкции.



Grove Manitowoc National Crane Potain

**Americas**  
**Manitowoc, Wisconsin, USA**  
Tel: +1 920 684 6621  
Fax: +1 920 683 6277

**Shady Grove, Pennsylvania, USA**  
Tel: +1 717 597 8121  
Fax: +1 717 597 4062

**Europe, Middle East, Africa**  
**Dardilly, France**  
Tel: +33 (0)4 72 18 20 20  
Fax: +33 (0)4 72 18 20 00

**China**  
**Shanghai, China**  
Tel: +86 21 6457 0066  
Fax: +86 21 6457 4955

**Greater Asia-Pacific**  
**Singapore**  
Tel: +65 6264 1188  
Fax: +65 6862 4040

www.manitowoccranes.com