

Mâtère Mast Mast Mástil

∅ 1,6m x 1,6m

Mâtère Mast Mast Mástil

∅ 2m x 2m

PA 459

SB459

BA45A

PA 663

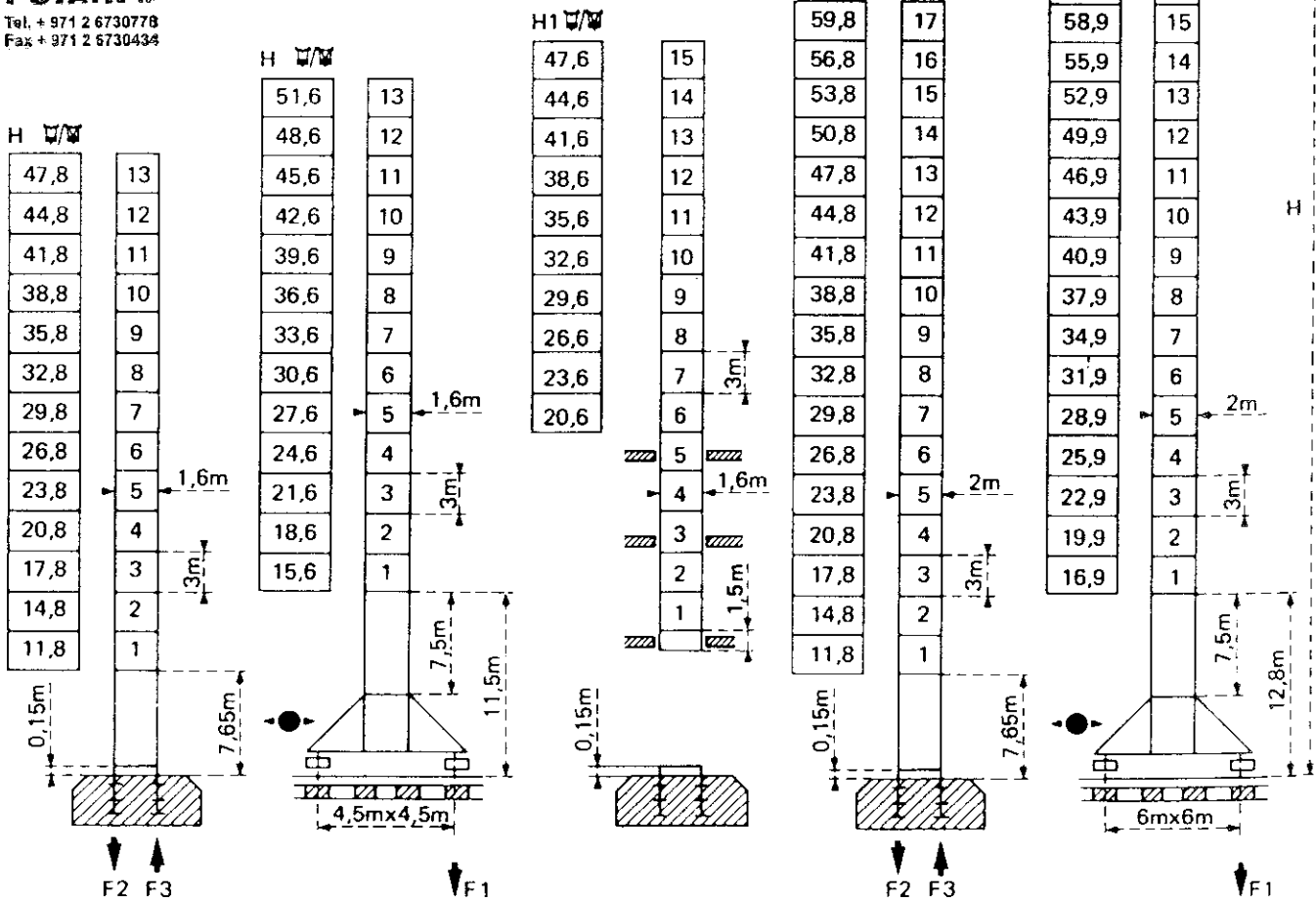
VB663

Flèche Ausleger Jib Flecha ≤ 55m



POTAIN
Tel. + 971 2 6730778
Fax + 971 2 6730434

$$H_{\square} = H_{\square/\square} + 0,7m$$



F2	● 102t	■ 130t
F3	● 70t	■ 103t
	39t	

F1	● 76t	■ 94t
	47t	

Voir ci-contre
Siehe nebenstehend
See opposite
Ver página opuesta

F2	● 108t	■ 165t
F3	● 69t	■ 132t
	49,5t	

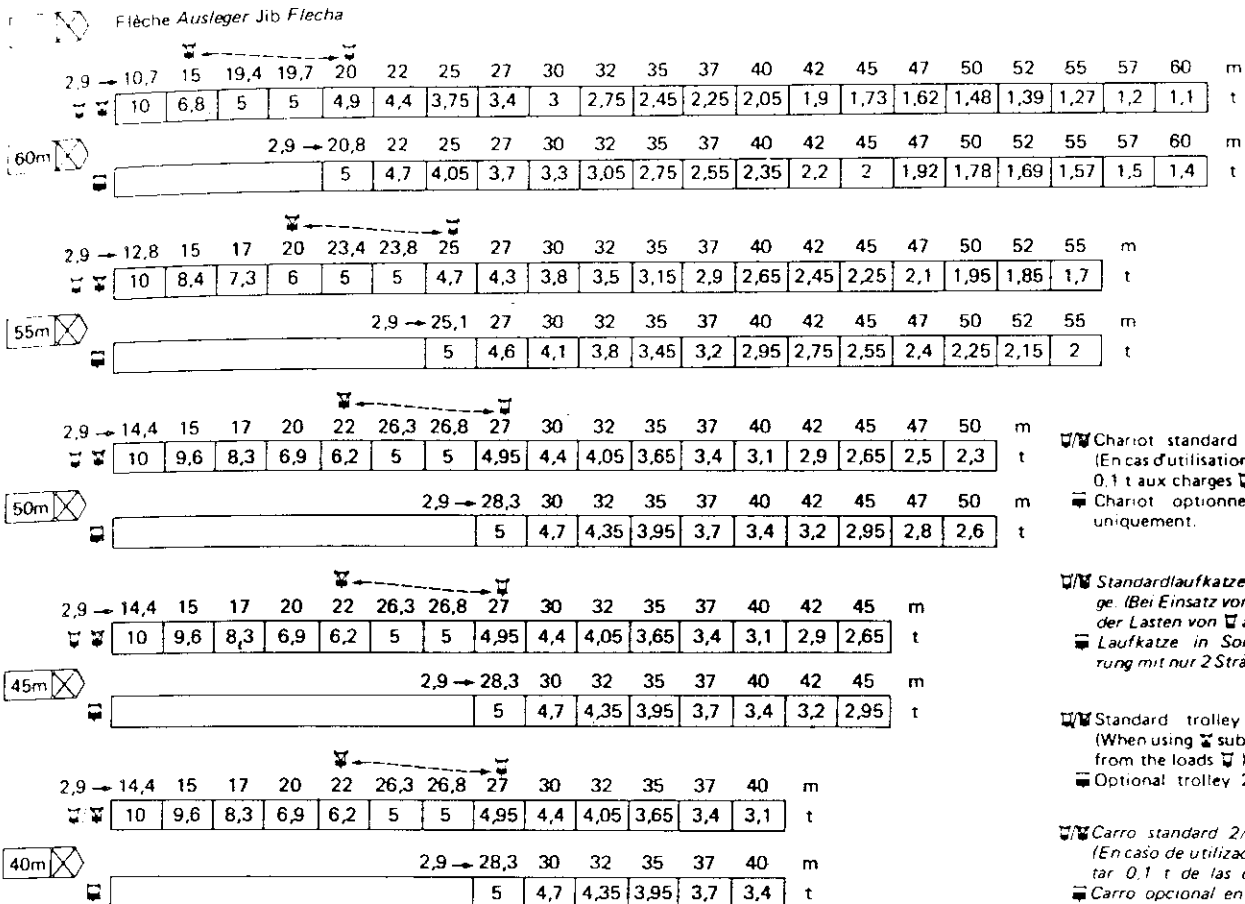
F1	● 86t	■ 115t
	62,5t	

Courbes de charges

Lastkurven

Load diagrams

Curvas de cargas



☐ Chariot standard 2/4 brins. (En cas d'utilisation ☐ déduire 0,1 t aux charges ☐).

☐ Chariot optionnel 2 brins uniquement.

☐ Standardlaufkatze 2/4 Stränge. (Bei Einsatz von ☐ ist 0,1 t der Lasten von ☐ abzuziehen. ☐ Laufkatze in Sonderausführung mit nur 2 Strängen.

☐ Standard trolley 2/4 fall. (When using ☐ subtract 0,1 t from the loads ☐).

☐ Optional trolley 2 fall only.

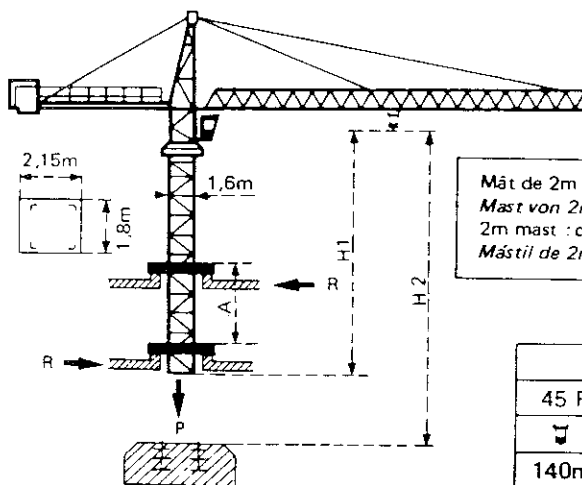
☐ Carro standard 2/4 ramales. (En caso de utilización ☐ quitar 0,1 t de las cargas ☐).

☐ Carro opcional en 2 ramales solamente.



POTAIN
Tel. + 971 2 6730778
Fax + 971 2 6730434

Télescopage sur dalles - Ketterkrane im Gebäude
Climbing crane - Telescopage gruas trepadoras

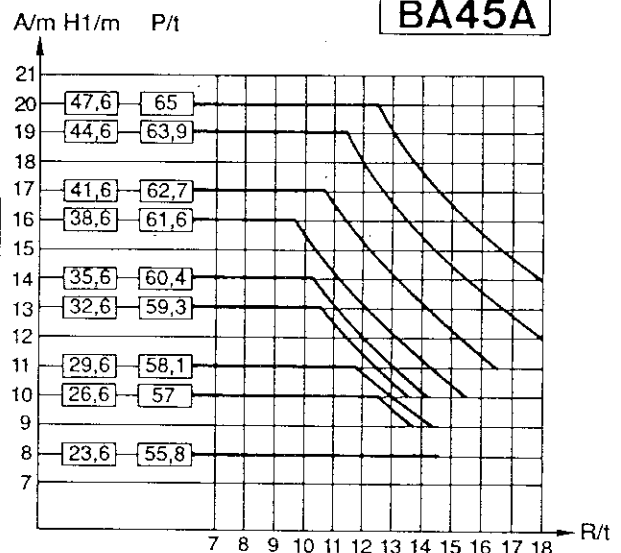


A Distance entre cadres
H1 Hauteur grue
P Poids de la grue
R Réaction horizontale

A Abstand zwischen den Rahmen
H1 Kranhöhe
P Krangewicht
R Horizontalkräfte

A Distance between collars
H1 Crane height
P Crane weight
R Horizontal reaction

A Distancia entre marcos
H1 Altura grúa
P Peso de la grúa
R Reaccion horizontal



● En service
■ Hors service

☐ A vide sans lest avec flèche et hauteur maximum.

● In Betrieb
■ Ausser Betrieb

☐ Ohne Last und Ballast mit Maximalausleger und Maximalhöhe.













● In service
■ Out of service

☐ Without load and ballast with longest jib and maximum height.

● En servicio
■ Fuera de servicio

☐ Sin cargas, sin lastre con flecha y altura máxima

Mécanismes *Antriebe* Mechanisms *Mecanismos*

				m/min	t		ch-PS hp	kW	
Levage Heben Hoisting Elevación	45 RCS 25 C 			0 → 32	5	287 m >287 m *	45	33	
				0 → 64	2,5				
				0 → 16	10				
				0 → 32	5				
Distribution - <i>Katzfahren</i> Trolleying - <i>Distribución</i>		5 D3 V4	15 30 58				5	3,7	
Orientation - <i>Schwenken</i> Slewing - <i>Orientación</i>		OMD 45	0 → 0,7 tr/min U/min-rpm				12	8,8	
Translation Kranfahren Travelling Traslación	SB 459  R ≥ 10m VB 663  R ≥ 13m	RT 324	12,5-25				2 x 7	2 x 5,2	
		TCV 449 ARC H ≤ 33,6m	10 - 50					4 x 6,8	4 x 5
		RT 443 A1 2V	15 - 30					4 x 5	4 x 3,7
		TCV 649 ARC H ≤ 43,9m	10 - 50					4 x 6,8	4 x 5
Réseau - <i>Netzstrom</i> - Mains supply - <i>Red</i>							380 V - 50 HZ		
Puissance électrique nécessaire - <i>Anschlusswert</i> - Necessary electric power - <i>Potencia electrica necesaria</i>							RCS : 70 kVA		
Groupe électrogène - <i>Stromaggregat</i> - Generator set - <i>Grupo electrogeno</i>							.		

* Nous consulter - *Auf Anfrage* - Consult us - *Consultarnos*

Conforme à la directive CEE 84/534 sur le niveau acoustique - *In compliance with the EEC 84/534 Instruction on noise level*
 Gemäss EWG-Richtlinie 84/534 über Schall-Leistungspegel - *Conforme con la directive CEE 84/534 sobre el nivel ecustico*

NF E52081 - 82

POTAIN

18, rue de Charbonnières, B.P. 173-F 69132 ECULLY Cedex
 Tél. 72.20.20.20 - Télex 330 179 - Télex. Export 375 213 -
 Fax 72 20 20 00

POTAIN GmbH 6082 MÖRFELDEN WALLDORF
 Nordendstr. 79-87 - Postfach 420
 Tél. 06 105 704.0 - Télex 4.1857 45



POTAIN
 Tél. + 971 2 8730778
 Fax + 971 2 8730436

TOPKIT H25/14C

Réf. 1989.18 KZN 1