

POTAIN

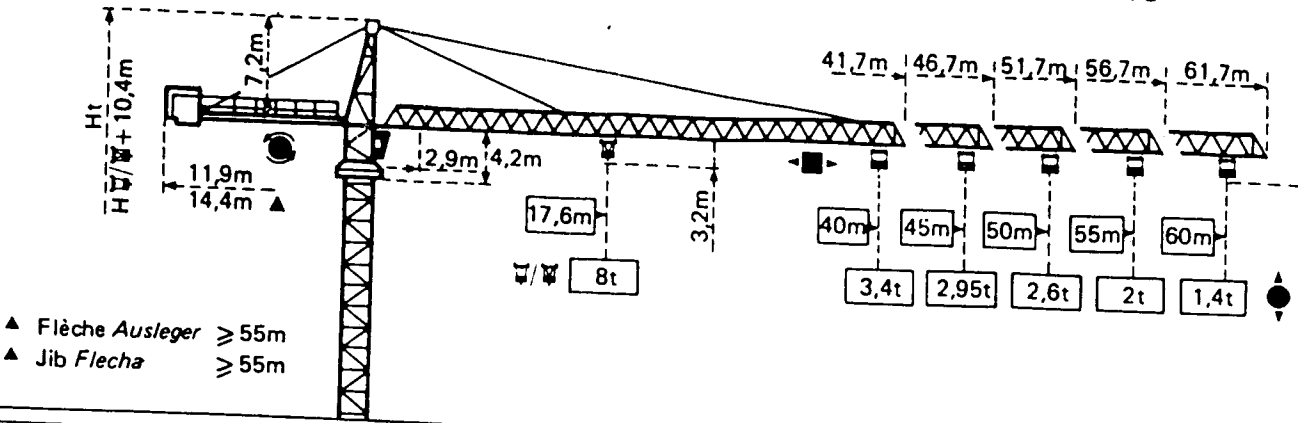
TOPKIT H20/14C

Cotes

Abmessungen

Dimensions

Dimensiones



Mâtère Mast Mast Mástil

1,6m x 1,6m

Mâtère Mast Mast Mástil

2m x 2m

PA 459

SB459

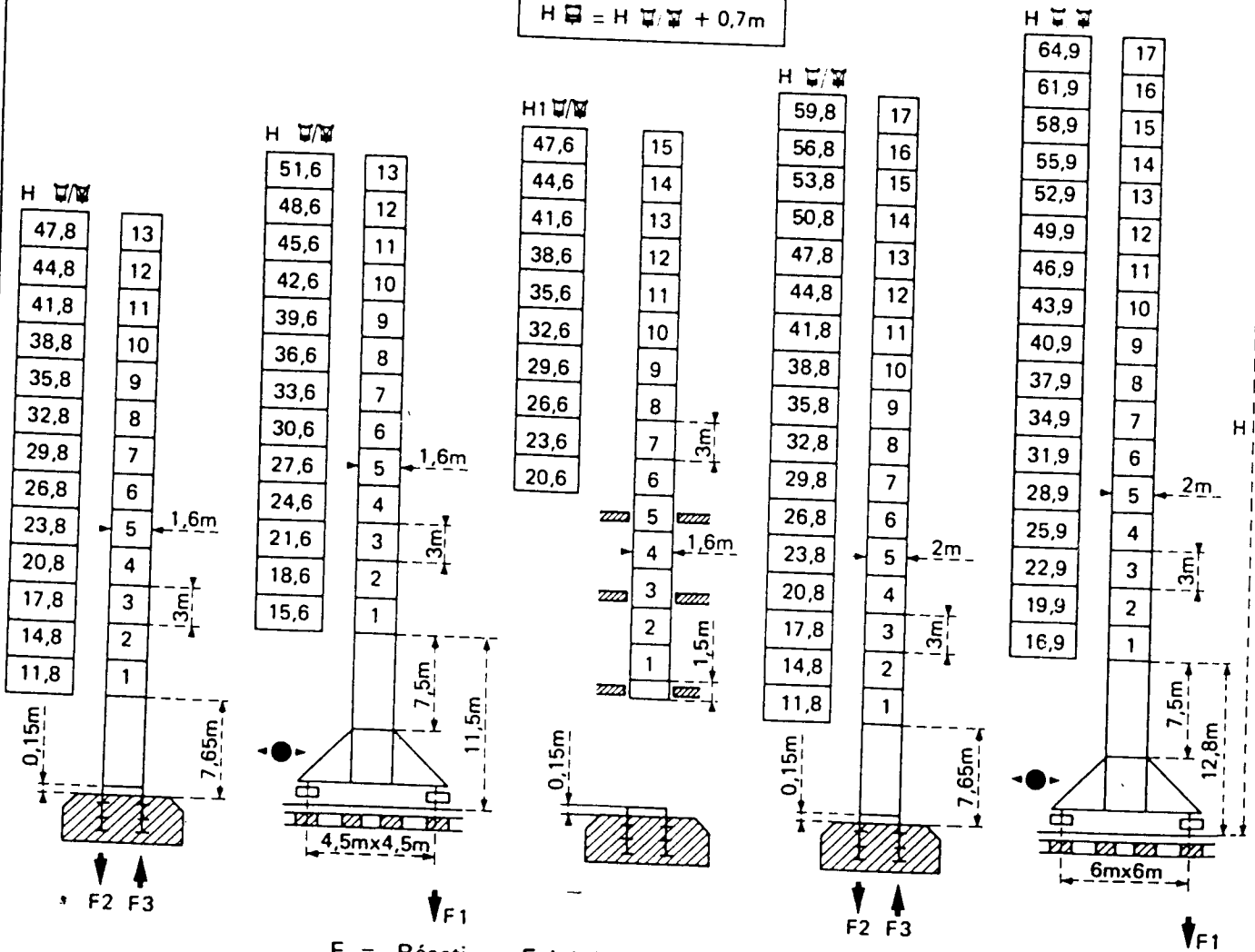
BA45A

PA 663

VB663

Flèche Ausleger Jib Flecha $\leq 55m$

$$H_{\text{total}} = H_{\text{jib}} + 0,7m$$



F = Réactions Eckdrücke Reactions Reacciones

F2 ● 102t ■ 130t

F3 ● 70t ■ 103t

39t

F1 ● 76t ■ 94t

47t

Voir ci-contre
Siehe nebenstehend
See opposite
Ver página opuesta

F2 ● 108t ■ 165t

F3 ● 69t ■ 132t

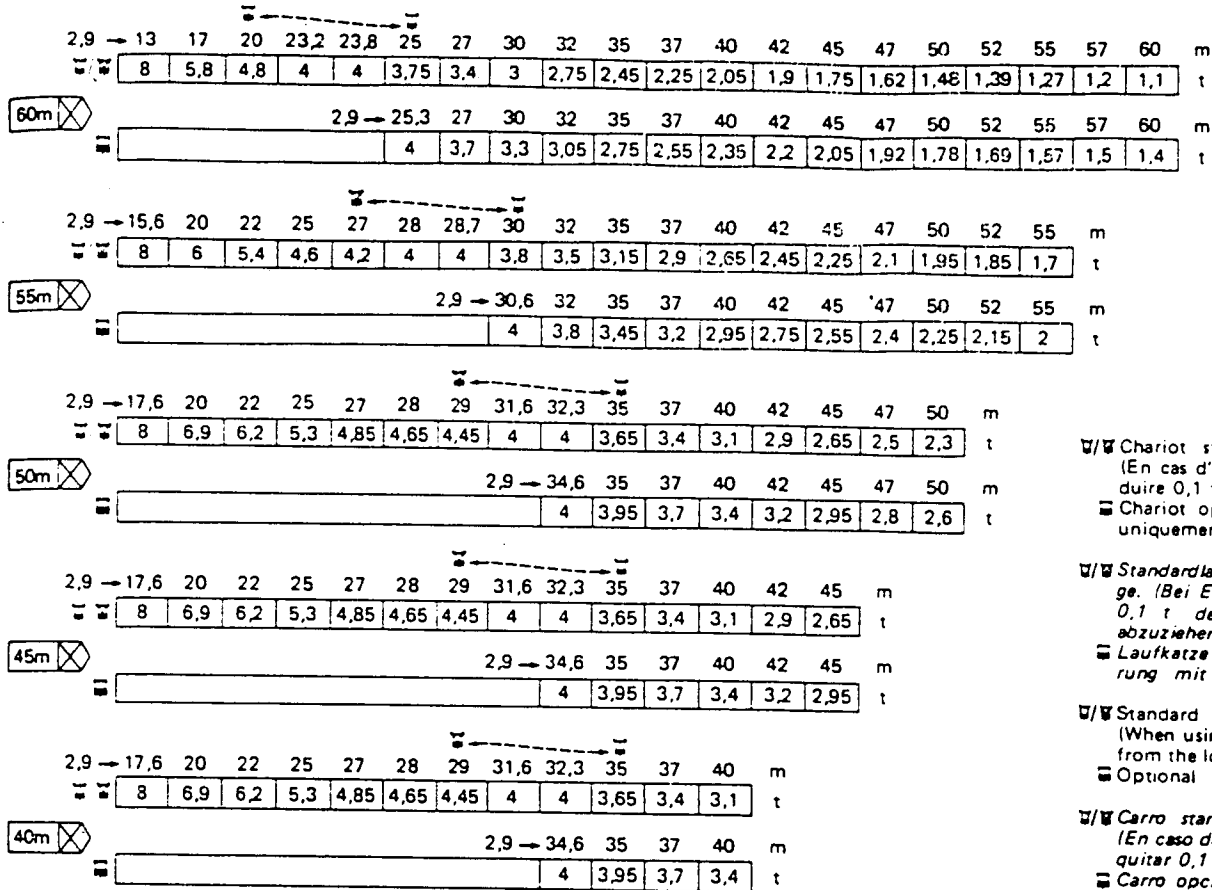
49,5t

F1 ● 86t ■ 115t

62,5t

Courbes de charges Lastkurven Load diagrams Curvas de cargas

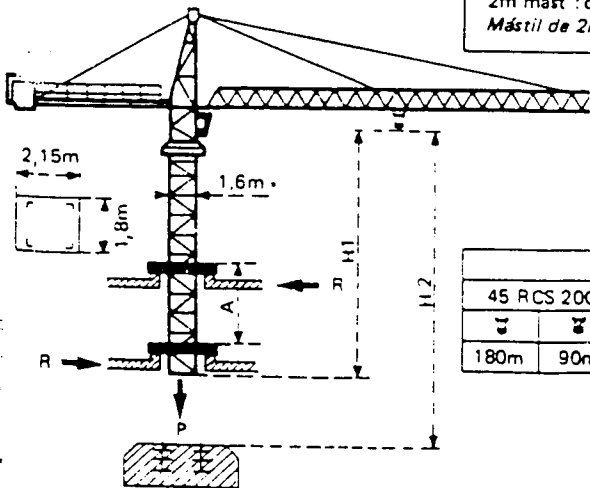
Flèche Ausleger Jib Flecha



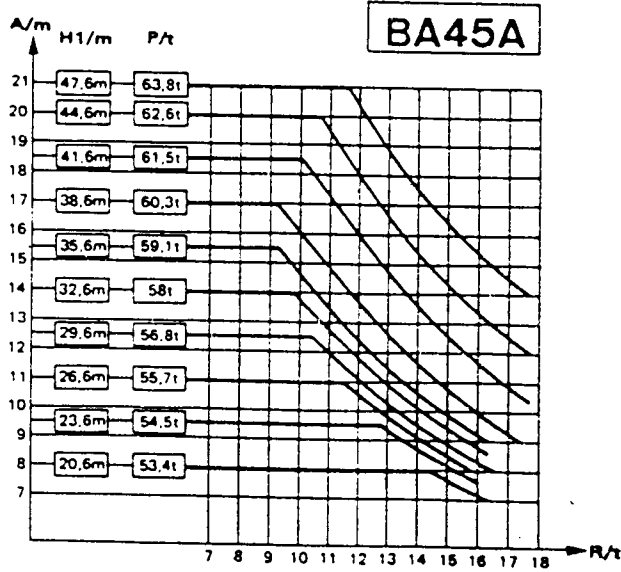
- Chariot standard 2/4 brins (En cas d'utilisation déduire 0,1 t aux charges).
- Chariot optionnel 2 brins uniquement.
- Standardlaufkatze 2/4 Stränge. (Bei Einsatz von ist 0,1 t der Lasten von abzuziehen.)
- Laufkatze in Sonderausführung mit nur 2 Strängen.
- Standard trolley 2/4 fall (When using subtract 0.1t from the loads).
- Optional trolley fall only.
- Carro standard 2/4 ramales (En caso de utilización quitar 0,1 t de las cargas).
- Carro opcional en 2 ramales solamente.

Télescopage sur dalles - Ketterkrane im Gebäude
Climbing crane - Telecopage gruas trepadoras

Mât de 2m : nous consulter
Mast von 2m : Auf Anfrage
2m mast : consult us
Mástil de 2m : consultarnos















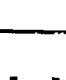









H2	
45 RCS 20C	33 PC 20C
180m	90m 150m 75m



- A Distance entre cadres / Abstand zwischen den Rahmen / Distance between collars
- H1 Hauteur grue / Kranhöhe / Crane height
- P Poids de la grue / Krangewicht / Crane weight
- R Réaction horizontale / Horizontalkräfte / Horizontal reaction

- En service / In Betrieb / In service
- Hors service / Ausser Betrieb / Out of service
- ⊕ A vide sans lest avec flèche et hauteur maximum. / Ohne Last und Ballast mit Maximalausleger und Maximalhöhe. / Without load and ballast with longest jib and maximum height.
- En servicio / Fuera de servicio
- ⊕ Sin cargas, sin lastre con flecha y altura máxima.

Mécanismes *Antriebe* Mechanisms *Mecanismos*

				m/min	r		ch-PS hp	kW	
Leverage <i>Heben</i> Hoisting <i>Elevación</i>	45 RCS 20 C 			0 → 40	4	381 m > 381 m .	45	33	
				0 → 80	2				
				0 → 20	8				
				0 → 40	4				
	33 PC 20 C 			5,4	4	299 m > 299 m .	33	24	
				30	4				
				60	2				
				2,7	8				
				15	8				
				30	4				
	Distribution - <i>Katzfahren</i> Trolleying - <i>Distribución</i>		5 D3 V4	15 30 58				5	3,7
	Orientation - <i>Schwanken</i> Stewing - <i>Orientación</i>		OMD 45	0 → 0,7 r/min U/min-rpm				12	8,8
Translation <i>Kranfahren</i> Travelling <i>Traslación</i>	SB 459  R ≥ 10m	RT 324	12,5-26				2 x 7	2 x 5,2	
		TCV 449 ARC H ≤ 33,6m	10 - 50				4 x 6,8	4 x 6	
	VB 663  R ≥ 13m	RT 443 A1 2V	15 - 30				4 x 6	4 x 3,7	
		TCV 649 ARC H ≤ 43,9m	10 - 50				4 x 6,8	4 x 5	
Réseau - <i>Netzstrom</i> - Mains supply - <i>Red</i>							380 V - 50HZ		
Puissance électrique nécessaire - <i>Anschlusswert</i> - Necessary electric power - <i>Potencia eléctrica necesaria</i>							RCS : 70 kVA PC : 50 kVA		
Groupe électrogène - <i>Stromaggregat</i> - Generator set - <i>Grupo electrogeno</i>							.		

* Nous consulter - *Auf Anfrage* - Consult us - *Consultarnos*

Conforme à la directive CEE 84/534 sur le niveau acoustique - *In compliance with the EEC 84/534 instruction on noise level*
 Gemäß EWG-Richtlinie 84/534 über Schall-Leistungspegel - *Conforme con la directiva CEE 84/534 sobre el nivel acústico*

NF E52081 - 82

POTAIN

18, rue de Charbonnières, B.P. 173-F 69132 ECULLY Cedex
 Tél. 72.20.20.20 - Téléx 330 179 - Téléx. Export 375.213 -
 Fax 72 20 20 00

POTAIN GmbH 6082 MÖRFELDEN WALLDORF
 Nordendstr. 79-87 - Postfach 420
 Tél. 06 105 704.0 - Téléx 4.1857 45



TOPKIT H20/14C

Ref. 1989.18 KZL 1