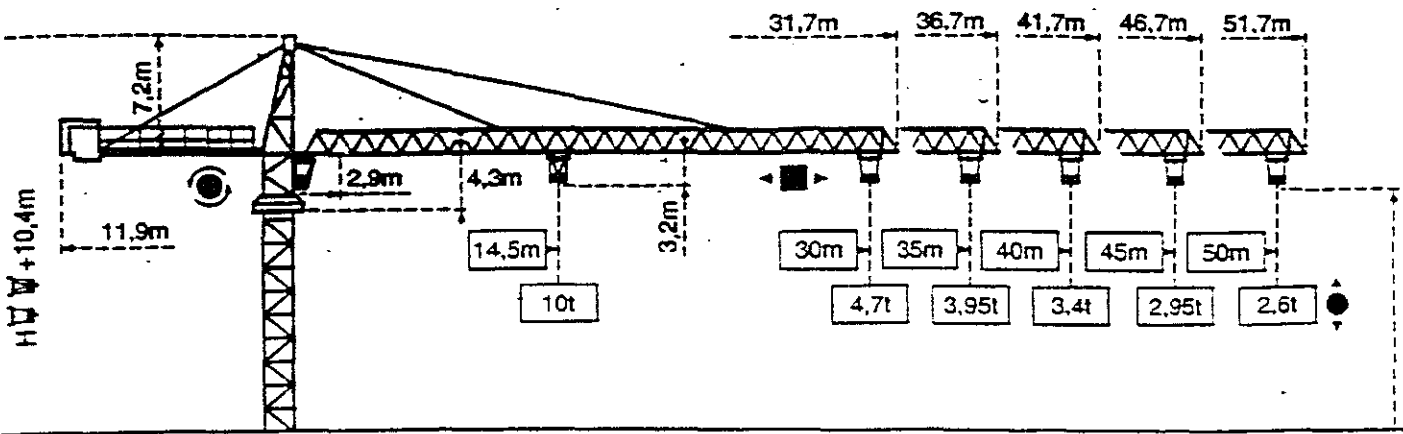


Cotes Abmessungen Dimensions Dimensiones



Mâtère Mast Mast Mástil  
 □ 1,6m x 1,6m

Mâtère Mast Mast Mástil  
 □ 2m x 2m

PA 459

SA 452

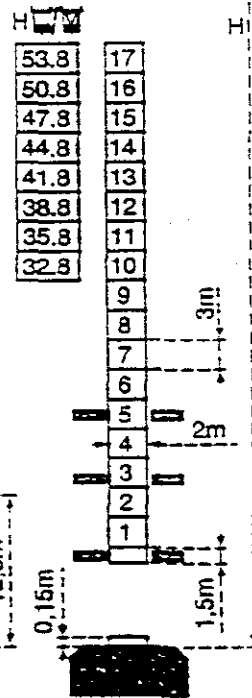
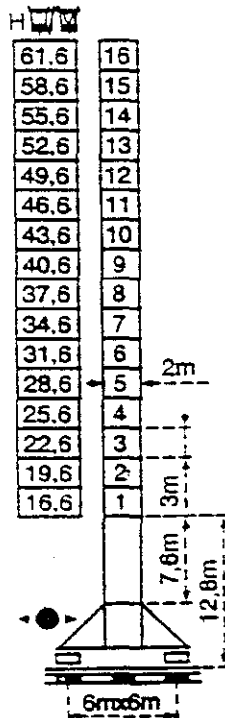
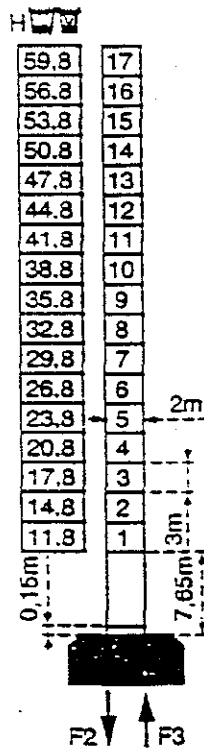
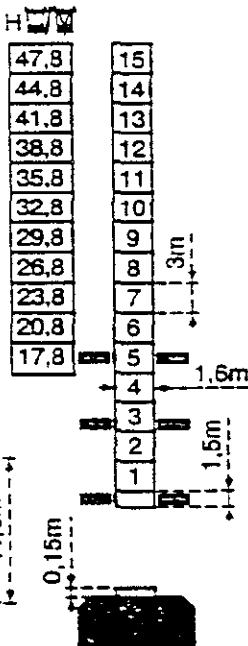
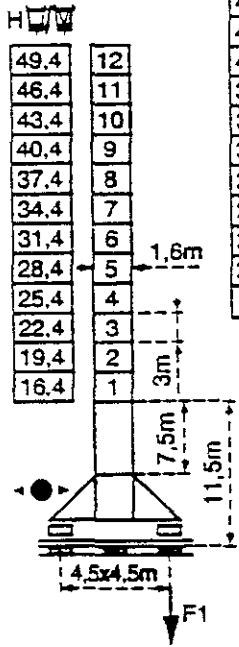
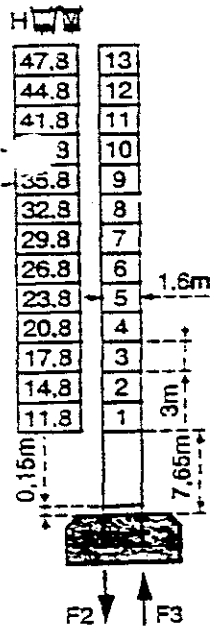
BA 45A

PA 664

VA 650

BA 675

$H_{\square} = H_{\square} / \square + 0,7m$



F = Réactions Eckdrücke Reactions Reacciones Reazioni

F2	● 105t	■ 135t
F3	● 72t	■ 108t
	● 42t	

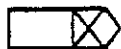
F1	● 70t	■ 89t
	● 50t	

Voir ci-contre  
 Siehe  
 Nebenstehend  
 See opposite  
 Ver página opuesta

F2	● 108t	■ 192t
F3	● 68t	■ 157t
	● 57,8t	

F1	● 86t	■ 120t
	● 69t	

Nous consulter  
 Auf Anfrage  
 Consult us  
 Consultarnos



Flèche Ausleger Jib Flecha

2.9	14.5	16	18	20	22	24	26	26.9	30	32	34	36	38	40	42	44	46	48	50
10	8.9	7.8	6.9	6.2	5.6	5	5	4.4	4.05	3.75	3.5	3.3	3.1	2.9	2.7	2.55	2.45	2.3	



2.9	14.5	17	19	21	23	25	26	26.9	29	31	33	35	37	39	41	43	45
10	8.3	7.3	6.5	5.9	5.3	5	5	4.55	4.2	3.9	3.65	3.4	3.15	3	2.8	2.65	



2.9	14.5	16	18	20	22	24	26	26.9	30	32	34	36	38	40
10	8.9	7.8	6.9	6.2	5.6	5	5	4.4	4.05	3.75	3.5	3.3	3.1	2.9



2.9	14.5	17	19	21	23	25	26	26.9	29	31	33	35
10	8.3	7.3	6.5	5.9	5.3	5	5	4.55	4.2	3.9	3.65	3.4



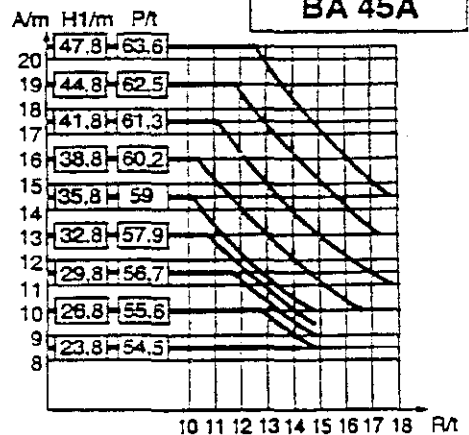
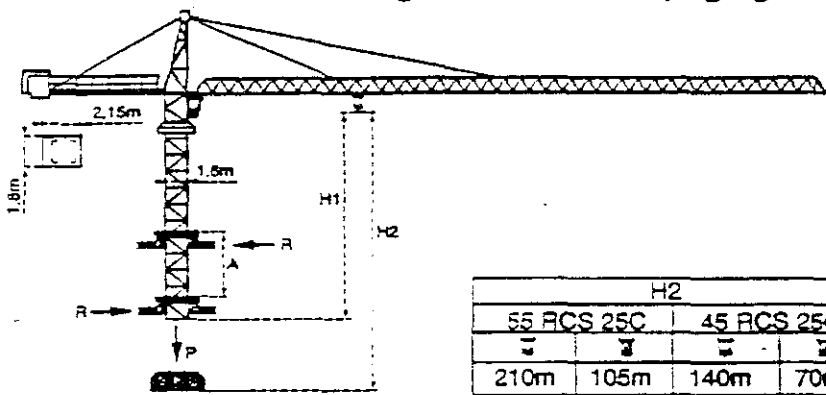
2.9	14.5	16	18	20	22	24	26	26.9	30	32	34	36	38	40
10	8.9	7.8	6.9	6.2	5.6	5	5	4.4	4.05	3.75	3.5	3.3	3.1	2.9



2.9	14.5	16	18	20	22	24	26	26.9	30
10	8.9	7.8	6.9	6.2	5.6	5	5	4.4	4.05




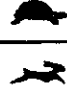




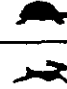






- Chariot 2/4 brins.  
(En cas d'utilisation  déduire 0.1 t aux charges .)
- Chariot 2 brins uniquement.
- Laufkatze 2/4 Stränge.  
(Bei Einsatz von  ist 0.1 t der Lasten von  abzuziehen).
- Laufkatze nur 2 Stängen.
- Trolley 2/4 fall.  
(When using  Subtract 0.1 t from the loads .)
- Trolley 2 fall only.
- Carro 2/4 ramales.  
(En caso de utilización  quitar 0.1 t de las cargas .)
- Carro en 2 ramales solamente.

Télescopage sur dalles - Kletterkrane im Gebäude  
Climbing crane - Telescopage gruas trepadoras



- |                                 |                               |                             |                                 |
|---------------------------------|-------------------------------|-----------------------------|---------------------------------|
| A Distance entre cadres         | A Abstand zwischen den Rahmen | A Distance between collars  | A Distancia entre marcos        |
| H1 Hauteur grue                 | H1 Kranhöhe                   | H1 Crane height             | H1 Altura grúa                  |
| P Poids de la grue (En service) | P Krangewicht (In Betrieb)    | P Crane weight (In service) | P Peso de la grúa (En servicio) |
| R Réaction horizontale          | R Horizontalkräfte            | R Horizontal reaction       | R Reacción horizontal           |

- |  |  |   |  |
|--|--|---|--|
| ● En service                                     | ● In Betrieb   | ● In service  | ● En servicio                                      |
| ■ Hors service                                   | ■ Ausser Betrieb   | ■ Out of service  | ■ Fuera de servicio                                |
| A vide sans lest avec flèche et hauteur maximum. | Ohne Last und Ballast mit Maximalausleger und Maximalhöhe. | Without load and ballast with longest jib and maximum height. | Sin carga, sin lastre con flecha y altura máximas. |

				m/min	t		ch-PS hp	kW
Levage Heben Hoisting Elevación	45 RCS 25C 	 	0 - 32	5	287m > 287m	45	33	
			0 - 64	2.5				
		 	0 - 16	10				
			0 - 32	5				
	55 RCS 25C 	 	0 - 42	5	431m > 431m	55	40,5	
			0 - 84	2.5				
		 	0 - 24	10				
			0 - 42	5				
Distribution - <i>Katzfahren</i> Trolleying - <i>Distribución</i>		5 D3 V4	15 30 58			5	3,7	
Orientation - <i>Schwenken</i> Slewing - <i>Orientación</i>		OMD 45	0 - 0,9 U/min U/min-rpm			2 x 6	2 x 4,4	
Translation Kranfahren Travelling Traslación	SA 452  R≥9m	RT 324 C1 2V	12,5 - 25			2 x 7	2 x 5,2	
	VA 650  R≥12m	RT 443 A1 2V	15 - 30			4 x 5	4 x 3,7	
Réseau - <i>Netzstrom</i> - Mains supply - <i>Red</i>							380V - 50 HZ	
Puissance électrique nécessaire - <i>Anschlusswert</i> - Necessary electric power Potencia eléctrica necesaria							45 RCS : 70 KVA 55 RCS : 75 KVA	
Groupe électrogène - <i>Stromaggregat</i> - Generator set - <i>Grupo electrogeno</i>							*	

\* Nous consulter - *Auf anfrage* - Consult us - *Consultarnos*

conforme à la directive CEE 84/534 sur le niveau acoustique - *Gemäß EWG-Richtlinie 84/534 über Schall-Leistungspegel*  
 in compliance with the EEC 84/534 instruction on noise level - *Conforme con la directiva CEE 84/534 sobre el nivel acústico*

NF E 52081 - 82

# POTAIN

1, rue de Charbonnières, B.P. 173-F 69132 ECULLY Cedex  
 Tél. 72.20.20.20 - Télex 330 179 - Télex. Export 375 213 -  
 Fax 72.20.20.00

POTAIN GmbH 6082 MÖRFELDEN WALLDORF  
 Waldenstr. 79-87 - Postfach 420  
 Tel. 06 105 704.0 - Télex 4.1857 45

TOPKIT F25/26C

2A . 6 . 005 . 82 4/4