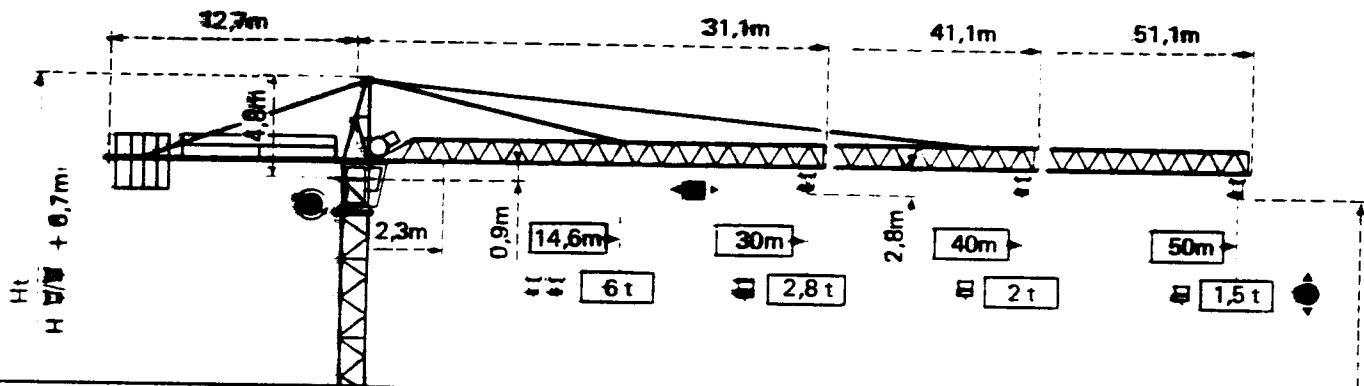


POTAIN TOPKIT F15/15C

Cotes Abmessungen Dimensions Dimensiones

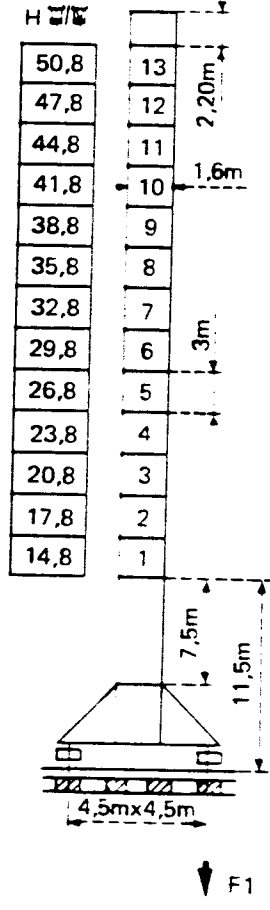
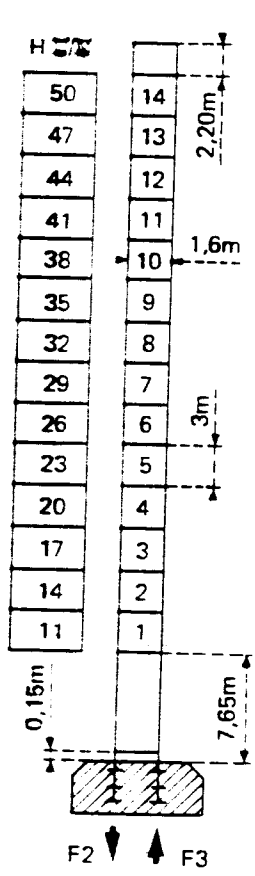


Mât/Mast/Mast/Mástil
 $\square 1,6m \times 1,6m$


PA 470


SB 469

$H = H_0/15 + 0,7m$



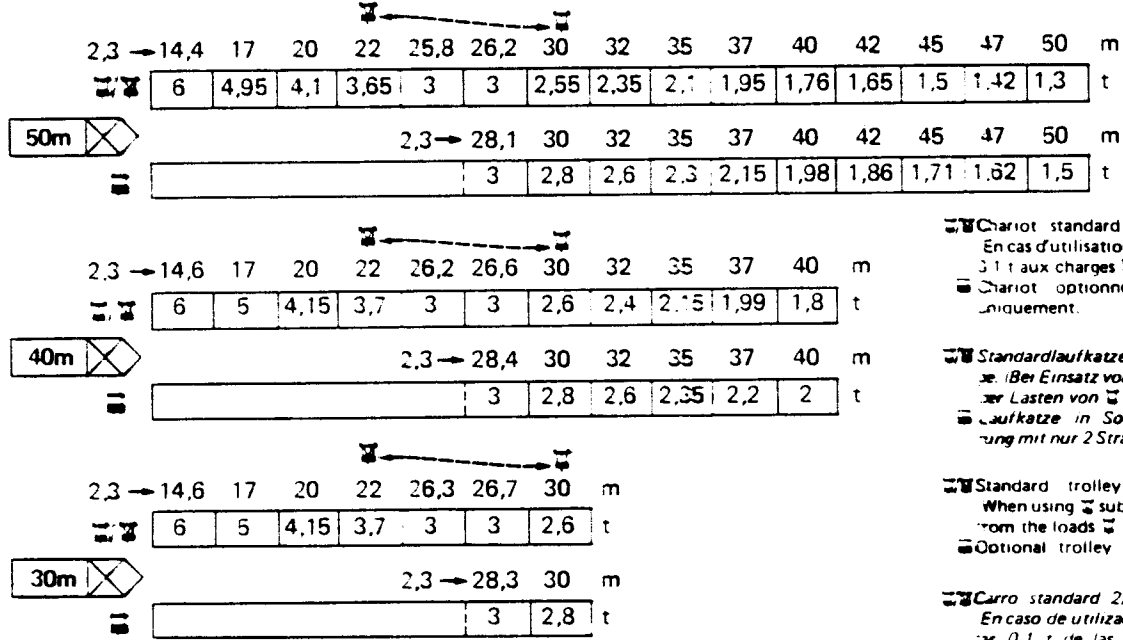
F = Réactions Eckdrücke Reacciones Reacciones

F2	● 40t	■ 132t
F3	● 56t	■ 111t
	34 t	

F1	● 60t	● 87t
	41 t	

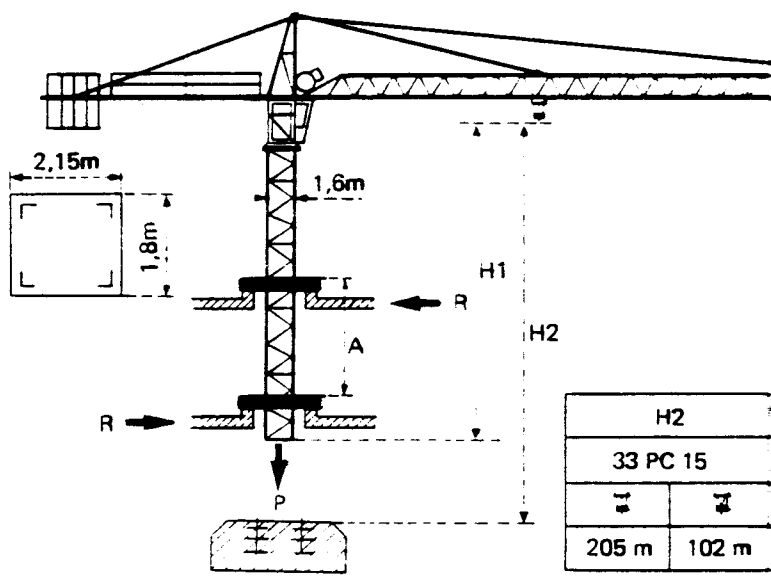
Courbes de charges Lastkurven Load diagrams Curvas de cargas

Flèche Ausleger Jib Flecha

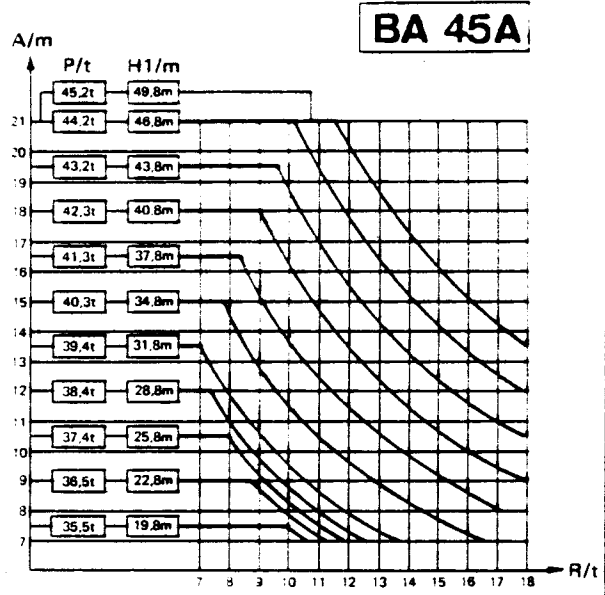


- ☐ Chariot standard 2/4 brins. En cas d'utilisation ☐ deduire 3 t aux charges ☐
- ☐ Chariot optionnel 2 brins uniquement.
- ☐ Standardlaufkatze 2/4 Stränge. Bei Einsatz von ☐ ist 0,1 t der Lasten von ☐ abzuziehen ☐ Laufkatze in Sonderausführung mit nur 2 Strängen.
- ☐ Standard trolley 2/4 fall. When using ☐ subtract 0.1 t from the loads ☐
- ☐ Optional trolley 2 fall only
- ☐ Carro standard 2/4 ramales. En caso de utilización ☐ quitar 0,1 t de las cargas ☐
- ☐ Carro opcional en 2 ramales solamente.

Télescopage sur dalles - Ketterkrane im Gebäude Climbing crane - Telecopage gruas trepadoras
















H2	
33 PC 15	
☐	☐
205 m	102 m



- | | | | |
|---------------------------------|-------------------------------|----------------------------|---------------------------------|
| A Distance entre cadres | A Abstand zwischen den Rahmen | A Distance between collars | A Distancia entre marcos |
| H1 Hauteur grue | H1 Kranhöhe | H1 Crane height | H1 Altura grúa |
| P Poids de la grue (En service) | P Krangewicht (In Betrieb) | P Crane weight In service | P Peso de la grúa (En servicio) |
| R Réaction horizontale | R Horizontalkräfte | R Horizontal reaction | R Reacción horizontal |

- | | | | |
|---|--|---|--|
| ● En service | ● In Betrieb | ● In service | ● En servicio |
| ■ Hors service | ■ Ausser Betrieb | ■ Out of service | ■ Fuera de servicio |
| ☐ As vide sans lest avec flèche et hauteur maximum. | ☐ Ohne Last und Ballast mit Maximalausleger und Maximalthöhe | ☐ Without load and ballast with longest jib and maximum height. | ☐ Sin cargas, sin lastre con flecha y altura máxima. |

Mécanismes Antriebe Mechanisms Mecanismos

				m/min	t		ch-PS hp	kW
Leverage Heben Hoisting Elevación	33 PC 15 			7	3	410m > 410m .	33	24,2
				38,5	3			
				77	1,5			
				3,5	6			
				19	6			
				38,5	3			
Distribution - Katzfahren Trolleying - Distribución		4 D3 V3	15 30 58			4	3	
Orientation - Schwenken Slewing - Orientación		RCV 80	0 → 0,8			2 x 6	2 x 4,4	
Translation Kranfahren Travelling Traslación	SB 469  R ≥ 10m	RT 324 C2 2V	12,5 - 25			2 x 7	2 x 5,2	
		RT 324 C1 2V				4 x 6,8	4 x 5	
		TCV 449 ARC H ≤ 32,8m	10 - 50			4 x 6,8	4 x 5	
Réseau - Netzstrom - Mains supply - Red							380V - 50 HZ	
Puissance électrique nécessaire - Anschlusswert - Necessary electric power - Potencia eléctrica necesaria							33 PC 15 : 50 KVA	
Groupe électrogène - Stromaggregat - Generator set - Grupo electrogeno							.	

*Nous consulter - Auf anfrage - Consult us - Consultarnos

Conforme à la directive CEE 84/534 sur le niveau acoustique - In compliance with the EEC 84/534 Instruction on noise level
 Gemäss EWG-Richtlinie 84/534 über Schall-Leistungspegel - Conforme con la directive CEE 84/534 sobre el nivel acustico

INF E 52081 - 82

POTAIN

18. rue de Charbonnières, B.P. 173-F 69132 ECULLY Cedex
 Tél. 72.20.20.20 - Télév. 330 179 - Téléx. Export 375 213 -
 Fax 72 20 20 00

POTAIN GmbH 6082 MÖRFELDEN WALLDORF
 Nordendstr. 79-87 - Postfach 420
 Tél. 06 105 704.0 - Téléx 4.1857 45

TOPKIT F15/15C

Réf. 1987.31 KSU 2

Modifications réservées - Änderungen vorbehalten - Subject to modification - Modificaciones reservadas
 Printed in France