

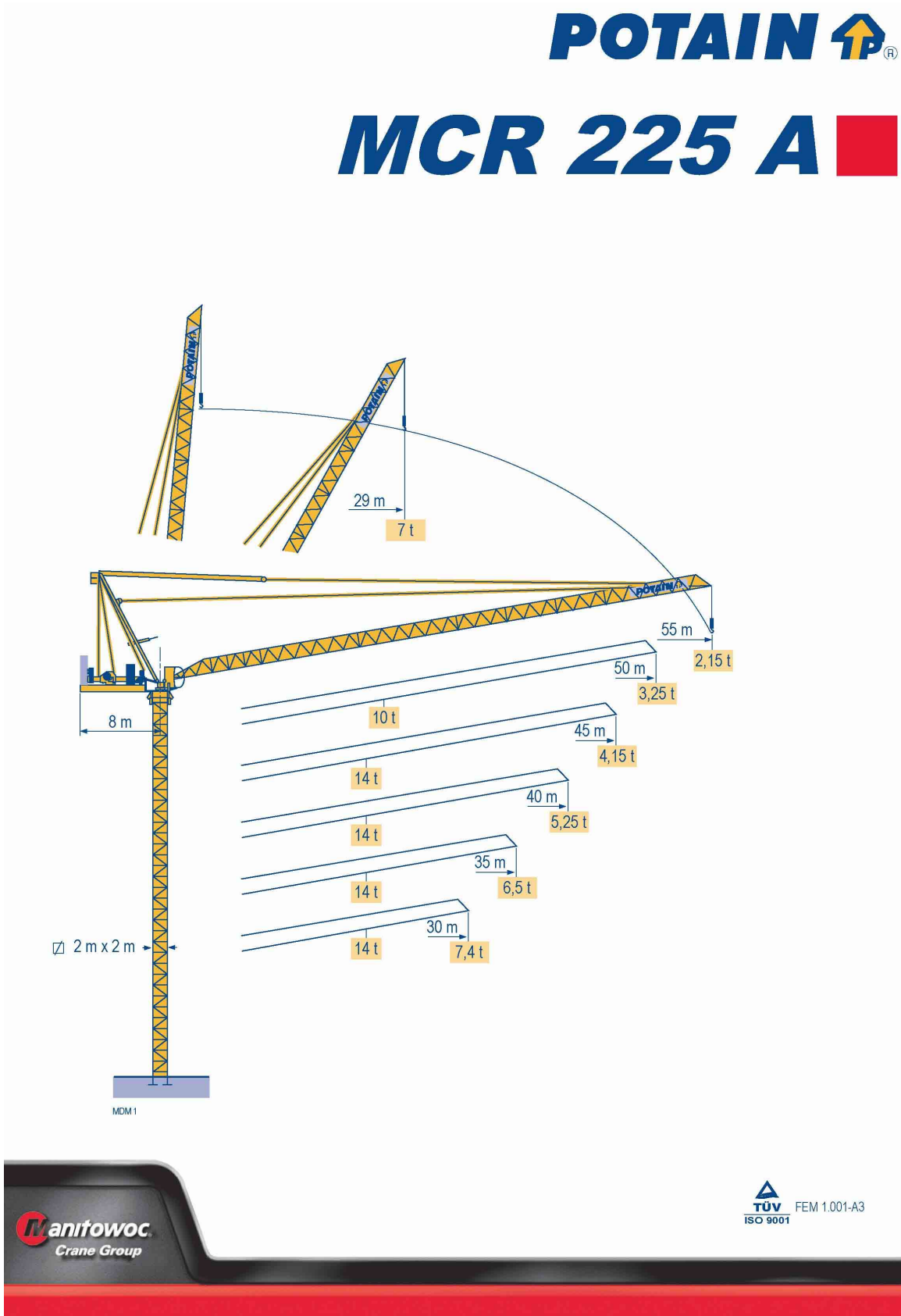


03D – TECHNICAL CHARACTERISTICS	2
1. DATASHEET	2
2. PERMISSIBLE WIND SPEED ACCORDING TO THE SURFACE OF A LIFTED LOAD ...	6
2. 1. EVALUATION OF A LOAD SURFACE	6
2. 2. TABLES OF PERMISSIBLE MAXIMUM WIND SPEEDS	6



03D – TECHNICAL CHARACTERISTICS

1. DATASHEET

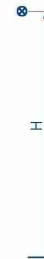
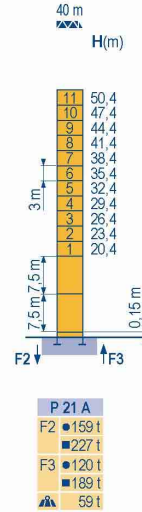
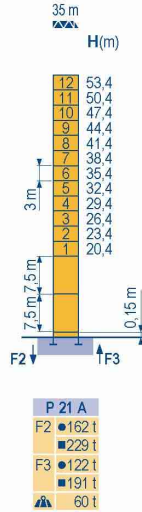
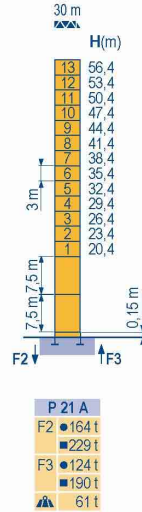




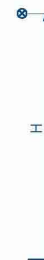
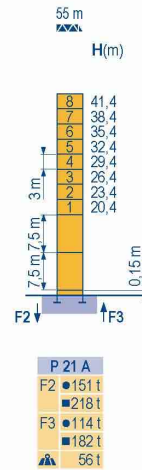
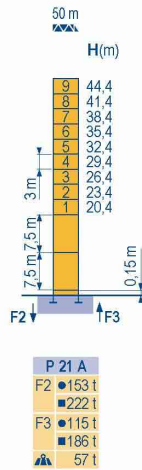
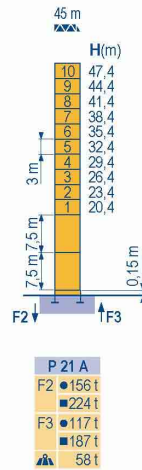
Masts / Reactions

MOM2

Telescopic 2 m



Telescopic 2 m



MCR 225 A



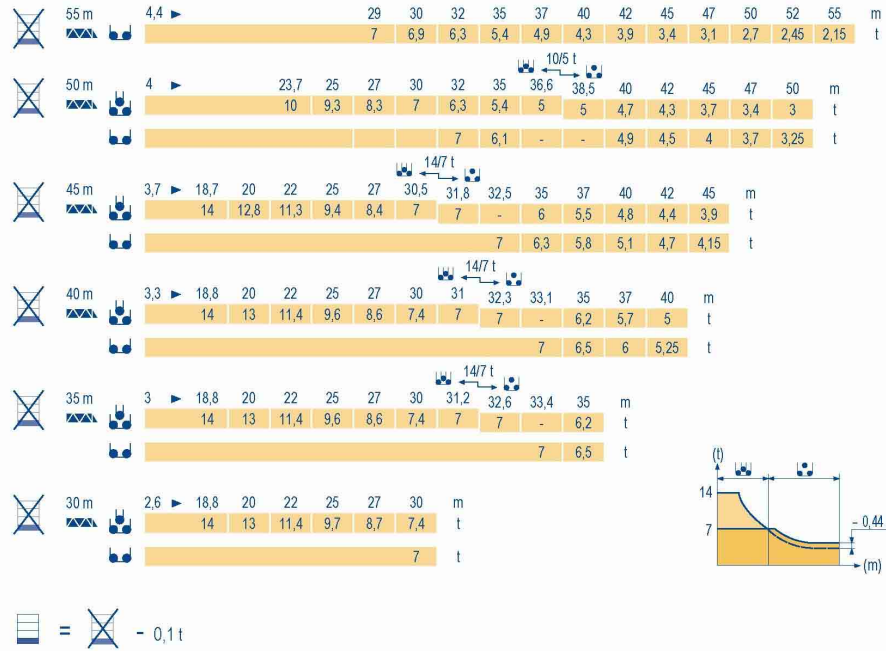
GB

- Reactions in service
- Reactions out of service
- ▲ Without load, ballast (or transport axles), with maximum jib and maximum height.



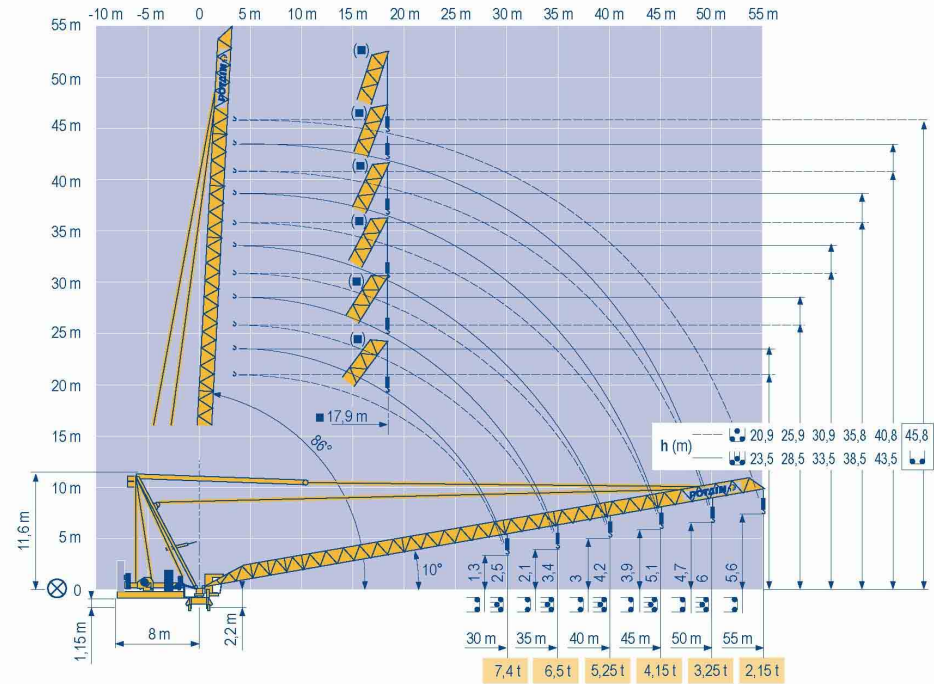
Load diagrams

MEM 1



Luffing jib

MEM 1



MCR 225 A



- (GB) Load diagrams without jib-end inspection platform
- Load diagrams with jib-end inspection platform deduct 0,1 t
- Jib hinge shaft
- Weather vaning position



Mechanisms

MDM 3

MCR 225 A - 50 Hz													hp	kW											
↑	75 LVF 35	m/min	0	→	40	→	46	→	81	→	96	0	→	20	→	23	→	41	→	48	75	55	766 m		
	Optima	t			7		6		3		2,25			14		12		6		4,5					
	100 LVF 35	m/min	0	→	52	→	62	→	108	→	140	0	→	26	→	31	→	54	→	70					
Optima	t			7		6		3		1,75			14		12		6		3,5						
↓	150 LCC 35	m/min	0	→	84	→	100	→	124	→	166	→	200	0	→	42	→	50	→	62	→	83	→	100	
	Optima	t			7		5,25		3,5		1,75		0,875		14		10,5		7		3,5		1,75		
	75 V VF 30	m/min	2 min																		75	55			
	RVF 162 Optima +	rpm	0 → 0,7																		2 x 7,5	2 x 5,5			
CEI 38			IEC 38										kVA												
400 V (+6% -10%)													75 LVF : 165 kVA 100 LVF : 190 kVA 150 LCC : 240 kVA												

MCR 225 A - 60 Hz													hp	kW											
↑	75 LVF 35	m/min	0	→	40	→	46	→	81	→	96	0	→	20	→	23	→	41	→	48	75	55	766 m		
	Optima	t			7		6		3		2,25			14		12		6		4,5					
	100 LVF 35	m/min	0	→	52	→	62	→	108	→	140	0	→	26	→	31	→	54	→	70					
Optima	t			7		6		3		1,75			14		12		6		3,5						
↓	150 LCC 35	m/min	0	→	84	→	100	→	124	→	166	→	200	0	→	42	→	50	→	62	→	83	→	100	
	Optima	t			7		5,25		3,5		1,75		0,875		14		10,5		7		3,5		1,75		
	75 V VF 30	m/min	2 min																		75	55			
	RVF 162 Optima +	rpm	0 → 0,7																		2 x 7,5	2 x 5,5			
CEI 38			IEC 38										kVA												
480 V (+6% -10%)													75 LVF : 165 kVA 100 LVF : 190 kVA 150 LCC : 270 kVA												

- GB
- Hoisting
- Luffing
- Slewing

This commercial document is not legally binding.
For any technical information, please refer to the corresponding instructions.

Americas
Tel : +1 888 479 7278
Tel : +1 717 593 2000

Europe - Middle East - Africa
Tel : +33 (0) 4 72 81 50 00
Tel : +44 (0) 191 522 2000

Asia - Pacific
Tel : +65 6264 1188
Fax : +65 6862 4142

Manitowoc
Crane CARE

Manitowoc
Crane Group

Manitowoc Crane Group Asia Pte Ltd
Manitowoc Crane Group
4 Kwong Min Road
Singapore 628707
Tel: +65 6264 1188
Fax: +65 6862 4040
www.manitowoccrane.com

MCR 225 A
Ref. 2006 06 MDM 3

Copyright.Reproduction interdite © POTAIN 2006

Subject to modification

Any reproduction for commercial purpose is forbidden

Réalisation Sedoc

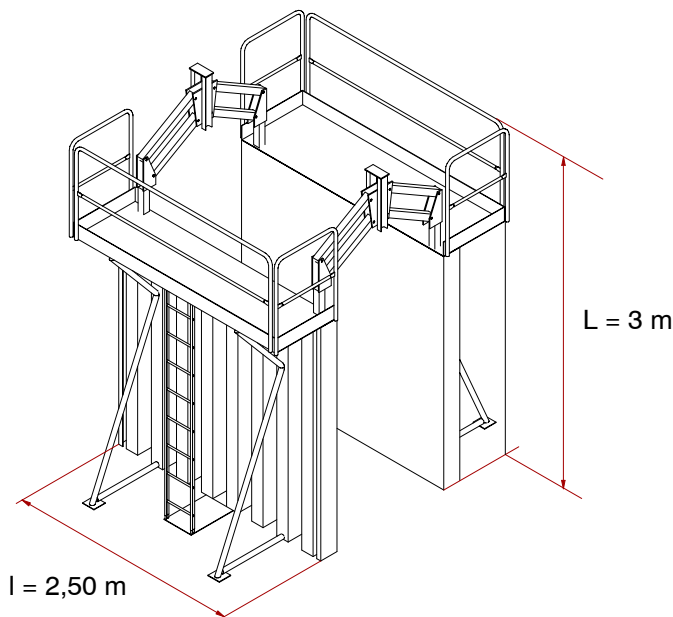


2. PERMISSIBLE WIND SPEED ACCORDING TO THE SURFACE OF A LIFTED LOAD

- The permissible operating wind speed is 72 km/h for a load of which the surface exposed to the wind does not exceed 1 m² per ton of useful load (standard data for the crane calculation). For reasons of stability, crane resistance and operating safety, it is necessary – in compliance with the standards in force – to reduce the permissible operating wind speed for handling loads with a surface/load ratio exceeding 1 m²/t.

2. 1. EVALUATION OF A LOAD SURFACE

- In easy cases, load with full or with latticed surface, the calculation of the surface is $S \text{ (m}^2\text{)} = L \times l$ – product of the two largest surfaces exposed to the wind (Ex.: sheetings, see below). In more difficult cases, PLEASE CONSULT US.



Example: $S = 3 \text{ m} \times 2,50 \text{ m} = 7,5 \text{ m}^2$

See the tables on the following pages for determining the permissible wind speed in service.

2. 2. TABLES OF PERMISSIBLE MAXIMUM WIND SPEEDS

- The tables of the following pages indicate the wind speed for:
 - a crane equipped with one trolley (SM/DM) which is used with 2–fall reeving (SM) or 4–fall reeving (DM),
 - a crane with only a 2–fall equipment (SM), but limited to its load capacity at 2–fall reeving.



It is not the actual value of the load which is important, but the crane capacity for a given radius which determines the maximum wind speed.



2. 2. 1. Description and use of tables

Characteristics – example :

- Crane type: MD 120 A
- Jib length: 50 m
- Radius: 30 m
- Weight of the load: 3,2 t

Calculation of the surface:

- Load surface: $S = 3 \text{ m} \times 2,50 \text{ m} = 7,5 \text{ m}^2 \approx 8 \text{ m}^2$

The permissible maximum wind speed in service is 48 km/h (see the grey tinted parts of the corresponding table). It corresponds to the crossing of the columns: radius 30 m, surface 8 m².

Radii	19	22	25	27	30	32	34	35	37	40	42	45	47	50
Load curve (in t)	6	5,13	4,41	4,03	3,64	3,27	3	3	2,79	2,53	2,38	2,18	2,06	1,9
S (in m ²)	Permissible maximum wind speed in service (in km/h)													
1	72	72	72	72	72	72	72	72	72	72	72	72	72	72
2	72	72	72	72	72	72	72	72	72	72	72	72	72	70
3	72	72	72	72	72	72	72	72	69	66	64	61	60	57
4	72	72	72	72	68	65	62	62	60	57	56	53	52	50
5	72	72	68	65	61	58	56	56	54	51	50	48	46	44
6	72	67	62	59	55	53	51	51	49	47	45	43	42	41
7	67	62	57	55	51	49	47	47	45	43	42	40	39	38
8	62	58	53	51	48	46	44	44	43	40	39	38	37	35

S = Surface of the lifted load in m²



2. 2. 2. Permissible maximum wind speed for a load surface bigger than 1m²/t (SM)

2. 2. 2. 1. 55 m jib

Radii	29	30	32	35	37	40	42	45	47	50	52	55
Load curve (in t)	7	6,9	6,3	5,4	4,9	4,3	3,9	3,4	3,1	2,7	2,45	2,15
S (in m ²)	Permissible maximum wind speed in service (in km/h)											
1	72	72	72	72	72	72	72	72	72	72	72	72
2	72	72	72	72	72	72	72	72	72	72	72	72
3	72	72	72	72	72	72	72	72	72	68	65	61
4	72	72	72	72	72	72	71	66	63	59	56	53
5	72	72	72	72	71	67	64	59	57	53	50	47
6	72	72	72	68	65	61	58	54	52	48	46	43
7	72	71	68	63	60	56	54	50	48	45	43	40
8	67	67	64	59	56	53	50	47	45	42	40	37
9	63	63	60	56	53	50	47	44	42	39	38	35
10	60	60	57	53	50	47	45	42	40	37	36	33
11	57	57	54	50	48	45	43	40	38	36	34	32
12	55	55	52	48	46	43	41	38	37	34	33	30
13	53	52	50	46	44	41	39	37	35	33	31	29
14	51	51	48	45	43	40	38	35	34	32	30	28
15	49	49	47	43	41	39	37	34	33	31	29	27
16	48	47	45	42	40	37	36	33	32	30	28	26
17	46	46	44	41	39	36	34	32	31	29	27	26
18	45	45	43	39	38	35	34	31	30	28	27	25
19	44	43	41	38	37	34	33	30	29	27	26	24
20	43	42	40	37	36	33	32	30	28	26	25	24

S = Surface of the lifted load in m²



2. 2. 3. Permissible maximum wind speed for a load surface bigger than 1m²/t (SM)

2. 2. 3. 1. 50 m jib

Radii			32	35	36,6	40	42	45	47	50		
Load curve (in t)			7	6,1	-	4,9	4,5	4	3,7	3,25		
S (in m ²)	Permissible maximum wind speed in service (in km/h)											
1			72	72		72	72	72	72	72		
2			72	72		72	72	72	72	72		
3			72	72		72	72	72	72	72		
4			72	72		72	72	72	69	65		
5			72	72		71	68	64	62	58		
6			72	72		65	62	59	57	53		
7			72	67		60	58	54	52	49		
8			67	63		56	54	51	49	46		
9			63	59		53	51	48	46	43		
10			60	56		50	48	46	44	41		
11			57	54		48	46	43	42	39		
12			55	51		46	44	42	40	37		
13			53	49		44	42	40	38	36		
14			51	48		43	41	38	37	35		
15			49	46		41	39	37	36	34		
16			48	44		40	38	36	35	32		
17			46	43		39	37	35	34	31		
18			45	42		38	36	34	33	31		
19			44	41		37	35	33	32	30		
20			43	40		36	34	32	31	29		

S = Surface of the lifted load in m²



2. 2. 4. Permissible maximum wind speed for a load surface bigger than 1m²/t (SM)

2. 2. 4. 1. 45 m jib

Radii			32,5	35	37	40	42	45				
Load curve (in t)			7	6,3	5,8	5,1	4,7	4,15				
S (in m ²)	Permissible maximum wind speed in service (in km/h)											
1			72	72	72	72	72	72				
2			72	72	72	72	72	72				
3			72	72	72	72	72	72				
4			72	72	72	72	72	72				
5			72	72	72	72	70	66				
6			72	72	71	66	64	60				
7			72	68	66	61	59	55				
8			67	64	61	57	55	52				
9			63	60	58	54	52	49				
10			60	57	55	51	49	46				
11			57	54	52	49	47	44				
12			55	52	50	47	45	42				
13			53	50	48	45	43	41				
14			51	48	46	43	42	39				
15			49	47	45	42	40	38				
16			48	45	43	41	39	37				
17			46	44	42	39	38	36				
18			45	43	41	38	37	35				
19			44	41	40	37	36	34				
20			43	40	39	36	35	33				

S = Surface of the lifted load in m²



2. 2. 5. Permissible maximum wind speed for a load surface bigger than 1m²/t (SM)

2. 2. 5. 1. 40 m jib

Radii			33,1	35	37	40						
Load curve (in t)			7	6,5	6	5,25						
S (in m ²)	Permissible maximum wind speed in service (in km/h)											
1			72	72	72	72						
2			72	72	72	72						
3			72	72	72	72						
4			72	72	72	72						
5			72	72	72	72						
6			72	72	72	67						
7			72	69	67	62						
8			67	65	62	58						
9			63	61	59	55						
10			60	58	56	52						
11			57	55	53	50						
12			55	53	51	48						
13			53	51	49	46						
14			51	49	47	44						
15			49	47	46	43						
16			48	46	44	41						
17			46	45	43	40						
18			45	43	42	39						
19			44	42	40	38						
20			43	41	39	37						

S = Surface of the lifted load in m²



2. 2. 6. Permissible maximum wind speed for a load surface bigger than 1m²/t (SM)

2. 2. 6. 1. 35 m jib

Radii			33,4	35								
Load curve (in t)			7	6,5								
S (in m ²)	Permissible maximum wind speed in service (in km/h)											
1			72	72								
2			72	72								
3			72	72								
4			72	72								
5			72	72								
6			72	72								
7			72	69								
8			67	65								
9			63	61								
10			60	58								
11			57	55								
12			55	53								
13			53	51								
14			51	49								
15			49	47								
16			48	46								
17			46	45								
18			45	43								
19			44	42								
20			43	41								

S = Surface of the lifted load in m²



2. 2. 7. Permissible maximum wind speed for a load surface bigger than 1m²/t (SM)

2. 2. 7. 1. 30 m jib

Radii	30											
Load curve (in t)	7											
S (in m ²)	Permissible maximum wind speed in service (in km/h)											
1	72											
2	72											
3	72											
4	72											
5	72											
6	72											
7	72											
8	67											
9	63											
10	60											
11	57											
12	55											
13	53											
14	51											
15	49											
16	48											
17	46											
18	45											
19	44											
20	43											

S = Surface of the lifted load in m²



2. 2. 8. Permissible maximum wind speed for a load surface bigger than 1m²/t (SM in SM/DM version)

2. 2. 8. 1. 50 m jib

Radii			23,7	25	27	30	32	35	36,6	38,5	40	42	45	47	50
Load curve (in t)			5	5	5	5	5	5	5	5	4,7	4,3	3,7	3,4	3
S (in m ²)	Permissible maximum wind speed in service (in km/h)														
1			72	72	72	72	72	72	72	72	72	72	72	72	72
2			72	72	72	72	72	72	72	72	72	72	72	72	72
3			72	72	72	72	72	72	72	72	72	72	72	72	72
4			72	72	72	72	72	72	72	72	72	72	69	66	62
5			72	72	72	72	72	72	72	72	70	67	62	59	56
6			66	66	66	66	66	66	66	66	64	61	57	54	51
7			61	61	61	61	61	61	61	61	59	56	52	50	47
8			57	57	57	57	57	57	57	57	55	53	49	47	44
9			54	54	54	54	54	54	54	54	52	50	46	44	42
10			51	51	51	51	51	51	51	51	49	47	44	42	39
11			49	49	49	49	49	49	49	49	47	45	42	40	38
12			46	46	46	46	46	46	46	46	45	43	40	38	36
13			45	45	45	45	45	45	45	45	43	41	38	37	35
14			43	43	43	43	43	43	43	43	42	40	37	35	33
15			42	42	42	42	42	42	42	42	40	39	36	34	32
16			40	40	40	40	40	40	40	40	39	37	35	33	31
17			39	39	39	39	39	39	39	39	38	36	34	32	30
18			38	38	38	38	38	38	38	38	37	35	33	31	29
19			37	37	37	37	37	37	37	37	36	34	32	30	29
20			36	36	36	36	36	36	36	36	35	33	31	30	28

S = Surface of the lifted load in m²



2. 2. 9. Permissible maximum wind speed for a load surface bigger than 1m²/t (SM in SM/DM version)

2. 2. 9. 1. 45 m jib

Radii	18,7	20	22	25	27	30,5	31,8	32,5	35	37	40	42	45		
Load curve (in t)	7	7	7	7	7	7	7	-	6	5,5	4,8	4,4	3,9		
S (in m ²)	Permissible maximum wind speed in service (in km/h)														
1	72	72	72	72	72	72	72		72	72	72	72	72		
2	72	72	72	72	72	72	72		72	72	72	72	72		
3	72	72	72	72	72	72	72		72	72	72	72	72		
4	72	72	72	72	72	72	72		72	72	72	72	71		
5	72	72	72	72	72	72	72		72	72	71	68	64		
6	72	72	72	72	72	72	72		72	69	64	62	58		
7	72	72	72	72	72	72	72		67	64	60	57	54		
8	67	67	67	67	67	67	67		62	60	56	53	50		
9	63	63	63	63	63	63	63		59	56	53	50	47		
10	60	60	60	60	60	60	60		56	53	50	48	45		
11	57	57	57	57	57	57	57		53	51	48	46	43		
12	55	55	55	55	55	55	55		51	49	46	44	41		
13	53	53	53	53	53	53	53		49	47	44	42	39		
14	51	51	51	51	51	51	51		47	45	42	40	38		
15	49	49	49	49	49	49	49		46	44	41	39	37		
16	48	48	48	48	48	48	48		44	42	39	38	36		
17	46	46	46	46	46	46	46		43	41	38	37	34		
18	45	45	45	45	45	45	45		42	40	37	36	34		
19	44	44	44	44	44	44	44		40	39	36	35	33		
20	43	43	43	43	43	43	43		39	38	35	34	32		

S = Surface of the lifted load in m²



2. 2. 10. Permissible maximum wind speed for a load surface bigger than 1m²/t (SM in SM/DM version)

2. 2. 10. 1. 40 m jib

Radii	18,8	20	22	25	27	30	31	32,3	33,1	35	37	40			
Load curve (in t)	7	7	7	7	7	7	7	7	-	6,2	5,7	5			
S (in m ²)	Permissible maximum wind speed in service (in km/h)														
1	72	72	72	72	72	72	72	72		72	72	72			
2	72	72	72	72	72	72	72	72		72	72	72			
3	72	72	72	72	72	72	72	72		72	72	72			
4	72	72	72	72	72	72	72	72		72	72	72			
5	72	72	72	72	72	72	72	72		72	72	72			
6	72	72	72	72	72	72	72	72		72	70	66			
7	72	72	72	72	72	72	72	72		68	65	61			
8	67	67	67	67	67	67	67	67		63	61	57			
9	63	63	63	63	63	63	63	63		60	57	54			
10	60	60	60	60	60	60	60	60		57	54	51			
11	57	57	57	57	57	57	57	57		54	52	49			
12	55	55	55	55	55	55	55	55		52	50	46			
13	53	53	53	53	53	53	53	53		50	48	45			
14	51	51	51	51	51	51	51	51		48	46	43			
15	49	49	49	49	49	49	49	49		46	44	42			
16	48	48	48	48	48	48	48	48		45	43	40			
17	46	46	46	46	46	46	46	46		43	42	39			
18	45	45	45	45	45	45	45	45		42	41	38			
19	44	44	44	44	44	44	44	44		41	39	37			
20	43	43	43	43	43	43	43	43		40	38	36			

S = Surface of the lifted load in m²



2. 2. 11. Permissible maximum wind speed for a load surface bigger than 1m²/t (SM in SM/DM version)

2. 2. 11. 1. 35 m jib

Radii	18,8	20	22	25	27	30	31,2	32,6	33,4	35					
Load curve (in t)	7	7	7	7	7	7	7	7	-	6,2					
S (in m ²)	Permissible maximum wind speed in service (in km/h)														
1	72	72	72	72	72	72	72	72		72					
2	72	72	72	72	72	72	72	72		72					
3	72	72	72	72	72	72	72	72		72					
4	72	72	72	72	72	72	72	72		72					
5	72	72	72	72	72	72	72	72		72					
6	72	72	72	72	72	72	72	72		72					
7	72	72	72	72	72	72	72	72		68					
8	67	67	67	67	67	67	67	67		63					
9	63	63	63	63	63	63	63	63		60					
10	60	60	60	60	60	60	60	60		57					
11	57	57	57	57	57	57	57	57		54					
12	55	55	55	55	55	55	55	55		52					
13	53	53	53	53	53	53	53	53		50					
14	51	51	51	51	51	51	51	51		48					
15	49	49	49	49	49	49	49	49		46					
16	48	48	48	48	48	48	48	48		45					
17	46	46	46	46	46	46	46	46		43					
18	45	45	45	45	45	45	45	45		42					
19	44	44	44	44	44	44	44	44		41					
20	43	43	43	43	43	43	43	43		40					

S = Surface of the lifted load in m²



2. 2. 12. Permissible maximum wind speed for a load surface bigger than 1m²/t (DM in SM/DM version)

2. 2. 12. 1. 50 m jib

Radii			23,7	25	27	30	32	35	36,6	38,5	40	42	45	47	50
Load curve (in t)			10	9,3	8,3	7	6,3	5,4	5	4,56	4,26	3,86	3,26	2,96	2,56
S (in m ²)	Permissible maximum wind speed in service (in km/h)														
1			72	72	72	72	72	72	72	72	72	72	72	72	72
2			72	72	72	72	72	72	72	72	72	72	72	72	72
3			72	72	72	72	72	72	72	72	72	72	72	72	67
4			72	72	72	72	72	72	72	72	72	71	72	62	58
5			72	72	72	72	72	72	72	69	66	63	64	55	52
6			72	72	72	72	72	68	66	63	61	58	58	51	47
7			72	72	72	72	68	63	61	58	56	53	54	47	44
8			72	72	72	67	64	59	57	54	53	50	51	44	41
9			72	72	69	63	60	56	54	51	50	47	48	41	38
10			72	69	66	60	57	53	51	49	47	45	45	39	36
11			69	66	63	57	54	50	49	46	45	43	43	37	35
12			66	63	60	55	52	48	46	44	43	41	41	36	33
13			63	61	58	53	50	46	45	43	41	39	40	34	32
14			61	59	55	51	48	45	43	41	40	38	38	33	31
15			59	57	54	49	47	43	42	40	38	37	37	32	30
16			57	55	52	48	45	42	40	38	37	35	36	31	29
17			55	53	50	46	44	41	39	37	36	34	35	30	28
18			54	52	49	45	43	39	38	36	35	33	34	29	27
19			52	50	48	44	41	38	37	35	34	32	33	28	26
20			51	49	46	43	40	37	36	34	33	32	32	28	26

S = Surface of the lifted load in m²



2. 2. 13. Permissible maximum wind speed for a load surface bigger than 1m²/t (DM in SM/DM version)

2. 2. 13. 1. 45 m jib

Radii	18,7	20	22	25	27	30,5	31,8	35	37	38,5	40	42	45		
Load curve (in t)	14	12,8	11,3	9,4	8,4	7	6,56	5,56	5,06	-	4,36	3,96	3,46		
S (in m ²)	Permissible maximum wind speed in service (in km/h)														
1	72	72	72	72	72	72	72	72	72		72	72	72		
2	72	72	72	72	72	72	72	72	72		72	72	72		
3	72	72	72	72	72	72	72	72	72		72	72	72		
4	72	72	72	72	72	72	72	72	72		72	72	67		
5	72	72	72	72	72	72	72	72	72		67	64	60		
6	72	72	72	72	72	72	72	69	66		61	58	55		
7	72	72	72	72	72	72	70	64	61		57	54	51		
8	72	72	72	72	72	67	65	60	57		53	51	47		
9	72	72	72	72	70	63	61	57	54		50	48	45		
10	72	72	72	70	66	60	58	54	51		48	45	42		
11	72	72	72	67	63	57	56	51	49		45	43	40		
12	72	72	70	64	60	55	53	49	47		43	41	39		
13	72	71	67	61	58	53	51	47	45		42	40	37		
14	72	69	65	59	56	51	49	45	43		40	38	36		
15	70	67	62	57	54	49	48	44	42		39	37	35		
16	67	64	61	55	52	48	46	42	40		38	36	33		
17	65	62	59	54	51	46	45	41	39		36	35	32		
18	63	61	57	52	49	45	43	40	38		35	34	32		
19	62	59	56	51	48	44	42	39	37		34	33	31		
20	60	58	54	49	47	43	41	38	36		34	32	30		

S = Surface of the lifted load in m²



2. 2. 14. Permissible maximum wind speed for a load surface bigger than 1m²/t (DM in SM/DM version)

2. 2. 14. 1. 40 m jib

Radii	18,8	20	22	25	27	30	31	32,3	35	37	40				
Load curve (in t)	14	13	11,4	9,6	8,6	7,4	7	6,56	5,76	7,26	4,56				
S (in m ²)	Permissible maximum wind speed in service (in km/h)														
1	72	72	72	72	72	72	72	72	72	72	72				
2	72	72	72	72	72	72	72	72	72	72	72				
3	72	72	72	72	72	72	72	72	72	72	72				
4	72	72	72	72	72	72	72	72	72	72	72				
5	72	72	72	72	72	72	72	72	72	72	69				
6	72	72	72	72	72	72	72	72	71	67	63				
7	72	72	72	72	72	72	72	70	65	62	58				
8	72	72	72	72	72	69	67	65	61	58	54				
9	72	72	72	72	70	65	63	61	58	55	51				
10	72	72	72	71	67	62	60	58	55	52	49				
11	72	72	72	67	64	59	57	56	52	50	46				
12	72	72	70	64	61	57	55	53	50	48	44				
13	72	72	67	62	59	54	53	51	48	46	43				
14	72	69	65	60	56	52	51	49	46	44	41				
15	70	67	63	58	55	51	49	48	45	43	40				
16	67	65	61	56	53	49	48	46	43	41	38				
17	65	63	59	54	51	48	46	45	42	40	37				
18	63	61	57	53	50	46	45	43	41	39	36				
19	62	60	56	51	48	45	44	42	40	38	35				
20	60	58	54	50	47	44	43	41	39	37	34				

S = Surface of the lifted load in m²



2. 2. 15. Permissible maximum wind speed for a load surface bigger than 1m²/t (DM in SM/DM version)

2. 2. 15. 1. 35 m jib

Radii	18,8	20	22	25	27	30	31,2	32,6	35						
Load curve (in t)	14	13	11,4	9,6	8,6	7,4	7	6,56	5,76						
S (in m ²)	Permissible maximum wind speed in service (in km/h)														
1	72	72	72	72	72	72	72	72	72						
2	72	72	72	72	72	72	72	72	72						
3	72	72	72	72	72	72	72	72	72						
4	72	72	72	72	72	72	72	72	72						
5	72	72	72	72	72	72	72	72	72						
6	72	72	72	72	72	72	72	72	71						
7	72	72	72	72	72	72	72	70	65						
8	72	72	72	72	72	69	67	65	61						
9	72	72	72	72	70	65	63	61	58						
10	72	72	72	71	67	62	60	58	55						
11	72	72	72	67	64	59	57	56	52						
12	72	72	70	64	61	57	55	53	50						
13	72	72	67	62	59	54	53	51	48						
14	72	69	65	60	56	52	51	49	46						
15	70	67	63	58	55	51	49	48	45						
16	67	65	61	56	53	49	48	46	43						
17	65	63	59	54	51	48	46	45	42						
18	63	61	57	53	50	46	45	43	41						
19	62	60	56	51	48	45	44	42	40						
20	60	58	54	50	47	44	43	41	39						

S = Surface of the lifted load in m²



2. 2. 16. Permissible maximum wind speed for a load surface bigger than 1m²/t (DM in SM/DM version)

2. 2. 16. 1. 30 m jib

Radii	18,8	20	22	25	27	30									
Load curve (in t)	14	13	1,4	9,7	8,7	7,4									
S (in m ²)	Permissible maximum wind speed in service (in km/h)														
1	72	72	72	72	72	72									
2	72	72	72	72	72	72									
3	72	72	72	72	72	72									
4	72	72	72	72	72	72									
5	72	72	72	72	72	72									
6	72	72	72	72	72	72									
7	72	72	72	72	72	72									
8	72	72	72	72	72	69									
9	72	72	72	72	71	65									
10	72	72	72	71	67	62									
11	72	72	72	68	64	59									
12	72	72	70	65	61	57									
13	72	72	67	62	59	54									
14	72	69	65	60	57	52									
15	70	67	63	58	55	51									
16	67	65	61	56	53	49									
17	65	63	59	54	52	48									
18	63	61	57	53	50	46									
19	62	60	56	51	49	45									
20	60	58	54	50	47	44									

S = Surface of the lifted load in m²